



Trimble Software

Release Notes

November 2021

ProDesign	2021.0.12
ProDesign 3D	2021.0.12
Protect	2021.0.12
SingleCable	2021.0.12
Powernet	2021.0.0

mep.trimble.co.uk
+44 (0)1908 608 833



Introduction

Welcome to the latest release of the Trimble ProDesign suite of products incorporating ProDesign, ProDesign 3D, Protect, SingleCable and Powernet.

This short document summarises the latest improvements, bug fixes and new features that are included in the latest versions of the products.

We are here to help

Our technical support service is provided by a team of qualified engineers who understand your business and your specific needs. PremierCare membership provides you with access to our engineers.

Already a member?

If you have any queries, please contact our PremierCare Support Team on +44 (0)1908 608 833 (select option 1 and then option 1 again) or email amtech-support@trimble.com

Become a member

If you don't already benefit from our technical support, please call us now on +44 (0)1908 608 833 (selecting option 1) or visit mep.trimble.co.uk

Activation

To activate your software, please call +44 (0)1908 608 833 (select option 1)

Training

For information on all our training courses visit the training area of our website at mep.trimble.co.uk/training

Contents

- Introduction 2
 - We are here to help 2
- Contents 3
- Product Overview 4
- Product Updates 5
 - ProDesign and ProDesign 3D (Version 2021.0.12) 5
 - Protect (Version 2021.0.12) 7
 - SingleCable (Version 2021.0.12) 8
 - PowerNet (Version 2021.0.0) 8
- Updating your Software 9
 - Software Update Notifications 9
 - Manually Checking for Updates 9
 - Technical Assistance 9
- Trimble Identity 10
 - Important information for all users 10
 - Logging In 11
 - Logging Out 11
- Trimble FastTest 12
 - End of Support 12
- System Requirements 13
 - Minimum Specifications 13

Product Overview

ProDesign

Our comprehensive, engineer-friendly 2D design and calculations solution. Ideal for projects of any size. Trusted by UK engineers and contractors for over 25 years, this highly accurate software provides electrical designers with a full suite of multi-region compliant calculations to BS, IEC, ADDC, DEWA, NEN and VDE standards and regulations.

ProDesign 3D / Stabicad Electrical

ProDesign 3D takes trusted ProDesign functionality and applies it to the 3D world. Originally built as a standalone application, ProDesign 3D is now also fully integrated into Stabicad Electrical.

This powerful combination of design and engineering software brings together Stabicad's drawing tools and extensive Revit families & symbols with ProDesign 3D's comprehensive circuit and containment calculations, Revit cable auto-routing and full circuit management tools.

Engineers and contractors are able to improve electrical design and engineering efficiency through streamlined and connected workflows, up-to-date manufacturer content and multi-region compliant calculations – all within a single solution. Furthermore, with both Stabicad Electrical and Stabicad Mechanical within the Trimble MEP portfolio, our software can support your entire MEP digital design workflow.

Protect

You don't need to be a protection expert to use Protect. The software contains a database of thousands of protective devices. The database is curated from and approved by leading manufacturers - so you can be confident in its accuracy. Protect helps prevent nuisance tripping by helping users to get it right at the design stage.

SingleCable

Simple to use cable calculation software, providing results in seconds - irrespective of whether the cable is a sub-main feeder or final circuit. Once calculated, the application also enables you assess the results for the next cable size larger or smaller - this same facility is also available for the protective device. These features provide valuable and quick insight into 'what if' scenarios – a labour intensive and time-consuming process when calculating manually.

PowerNet

Powerful graphical short circuit analysis application used to calculate short circuit currents to IEC 60909 and BS 7639. PowerNet deals with fault currents in both High and Low Voltage distribution systems. Quick and easy to use it enables studies to be carried out cost effectively on new and existing systems.

Our software applications are moving to subscription licenses, ensuring that users can seamlessly enjoy the latest features and updates.

If you haven't already moved to a new subscription license and would like to understand how it compares to your current PremierCareXtra Support & Maintenance contract, please contact a Trimble MEP sales representative on +44(0)1908 608 833.

There is no need to wait until your existing agreement is due for renewal as you can use your existing support contract as credit towards a new subscription licence.

Product Updates

ProDesign and ProDesign 3D (Version 2021.0.12)

The release of version 2021.0.11, while introducing new functionality, introduced some unforeseen issues. These issues only affected particular scenarios, but we considered that they merited urgent remediation.

Version 2021.0.12 was released just 10 days after 2021.0.11 and therefore includes all of the functionality from 2021.0.11 and the identified fixes.

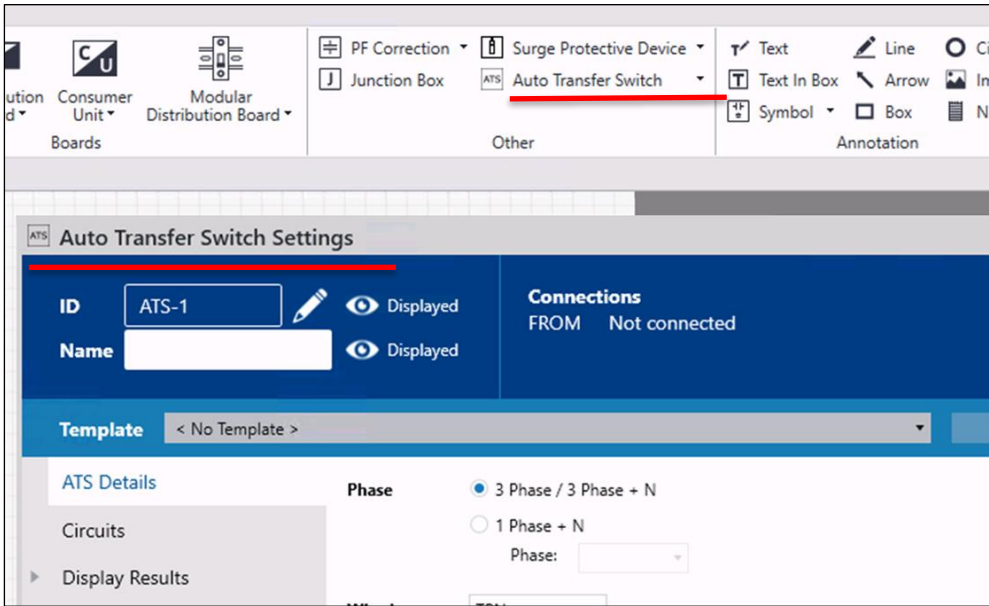
These release notes duplicate those issued with 2021.0.11 in all areas except the additional resolved bugs (highlighted in the appropriate section).

2021.011 introduced some significant behind-the-scenes improvements. These will enable us to provide a richer user experience beginning with 2021.0.11 and continuing throughout subsequent software releases.

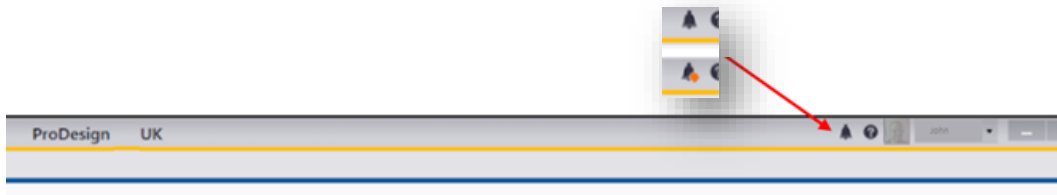
The first features to leverage these improvements are the new Notification Centre, the ability to include Auto Transfer Switches in modelling as well as richer Errors, Warnings and Notes functionality.

New Features:

- [MEPEL-1566] – Introduced Auto Transfer Switches to models, calculations and reports.



- [MEPEL-4882] – The Notification Centre feature has been added to the Title Bar informing users of key information including software updates (replacing the previous yellow notification bar) and important service announcements. When the coloured circle is showing, new notifications are present and can be viewed by clicking on the bell-shaped icon.



Improvements:

- [MEPEL-3906] – Behind the scenes improvements to adiabatic calculations enabling richer identification and classification of Errors, Warnings and Notes
- [MEPEL-4819] – Introduced the option in Application Settings (Messages) for a user to suppress Notes where the OCPD provides quicker protection than RCD in Earth Fault conditions
- [MEPEL-4669] – Improved “User Defined” Reference Methods capability for cable installations

Resolved Bugs:

- [MEPEL-4872] – Provided more appropriate communication of SPD error and an issue affecting reporting that could arise when specific cable length of 1m was applied
- [MEPEL-4890] – Resolved an intermittent issue that could cause a software crash when changing an Ir setting on a protective device
- [MEPEL-5407] – Fixed an issue that could affect ability to perform calculations when Windows regional settings were set to South Africa localisation

Included in v2021.0.12 release:

- [MEPEL-5687] – Fixed an issue identified in v2021,0.11 that could cause errors to be generated when selecting an HV device and performing calculations
- [MEPEL-5685] – Resolved an issue that could cause presentation of confusing explanatory notes associated with OCPDs and RCDs

This release also continued our focus on behind-the-scenes performance, reliability, and security improvements paving the way for new product features and updates that will be made available in the coming weeks.

Some of these changes can be seen by visiting our website:

<https://mep.trimble.com/en-GB/products/prodesign>

Product Updates

Protect (Version 2021.0.12)

New Features:

- [MEPEL-4882] - The Notification Centre feature has been added to the Title Bar informing users of key information including software updates (replacing the previous yellow notification bar) and important service announcements. When the coloured circle is showing, new notifications are present and can be viewed by clicking on the bell-shaped icon.



This release also incorporates a number of behind-the-scenes performance, reliability and security improvements.

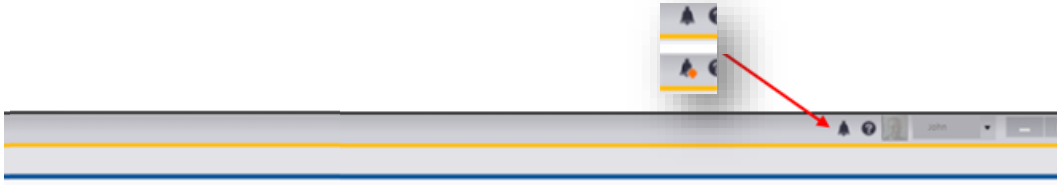
For more information on Protect please visit our website:

<https://mep.trimble.com/en-GB/products/protect>

SingleCable (Version 2021.0.12)

New Features:

- [MEPEL-4882] - The Notification Centre feature has been added to the Title Bar informing users of key information including software updates (replacing the previous yellow notification bar) and important service announcements. When the coloured circle is showing, new notifications are present and can be viewed by clicking on the bell-shaped icon.



- [MEPEL-4890] - Resolved an intermittent issue that could cause a software crash when changing an Ir setting on a protective device

As part of our commitment to the ongoing evolution of SingleCable, we have also included a number of behind-the-scenes performance, reliability and security improvements.

For more information on SingleCable please visit our website:

<https://mep.trimble.com/en-GB/products/singlecable>

PowerNet (Version 2021.0.0)

No new updates have been issued for this software since version 2021.0.0

For more information on PowerNet please visit our website:

<https://mep.trimble.com/en-GB/products/powernet>

Updating your Software

Software Update Notifications

The ProDesign suite of applications will notify you when a suitable update is available. If an update is available, you will be presented with a yellow banner or a notification in the Notification Centre depending on your current version. Click on this to view the available updates.

Manually Checking for Updates

It is also possible to manually check for updates - we recommend doing this as soon as you have installed your software. You can initiate an update check at any time by following these instructions:

ProDesign, SingleCable and Protect

In versions up to and including 2021.0.10, select the 'Home', then 'Support' menu, selecting the 'Check for Updates' option and clicking on the 'Check Now' button.

Versions 2021.0.11 onwards now perform an automatic check for updates when starting the application.

ProDesign 3D

Select the 'ProDesign 3D' ribbon in Revit, then 'Application Settings' menu, then select the 'Check for Updates' option and click on the 'Check Now' button.

Availability of Web Updates

Updates are only available to users who have:

- Internet access
- An active Trimble MEP product/service subscription or a current PremierCare agreement for the specific application
- Registered your software on our website

Technical Assistance

Our Technical Support team use a support tool which allows them to view and control users' machines remotely. This is only ever undertaken with the user's permission – and while being supervised by the user.

Our applications have a menu option link to the Support web page containing details of this assistance should it be required.

Important information for all users

All Trimble software that makes use of online services (including those used for updates) requires use of Trimble Identity. This is our way of helping ensure a secure and reliable service for our customers.

Continuing to invest in delivering best-in-class, reliable and secure systems, Trimble has updated Trimble Identity (TID), the method used to log in when using ProDesign, SingleCable and Protect as well as other products from the Trimble MEP portfolio.

As a result, our software products have been updated to make use of the new and improved Trimble Identity.

The 2021.0.5 release of ProDesign, SingleCable and Protect was the first version of the respective applications to make use of this new Trimble Identity (TID) functionality.

To ensure continued access to our services (including the latest calculations, reports and circuit management functionality), it is important that customers have upgraded to **at least** the 2021.0.5 version.

This updated version of Trimble Identity includes multiple security and user experience features including:

- Two-factor authentication - providing a second layer of security to protect your company's information from malicious threats
- Single Sign-On (SSO) - enabling users to log into just one application while enabling access to other applications - improving efficiency while keeping data secure.
- Social Sign-In – using Google and Apple authentication to provide a quick and simple registration and login process.
- Ability to easily change the email address associated with your TID

Please note: separate updates for 2019 and 2020 versions of ProDesign, SingleCable and Protect are also available from the usual Support download locations.

Since 30 August 2021, any users with 2021.0.4 (or pre-TID update versions of 2019 and 2020) will be unable to make use of online services.

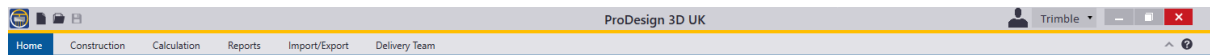
Trimble Identity

Logging In

When you first run ProDesign, SingleCable, or Protect, you will be presented with the Trimble Identity login screen.

This login screen will open inside your default internet browser (Edge, Chrome etc.).

Enter your Trimble ID login information as required, if you don't have an account yet select "Create new Trimble ID". Fill in your details and follow the instructions on this screen.



Once you are signed in, your username appears to the right of the toolbar (next to the person icon) to confirm you are signed in. This also provides access to Trimble Connect if you have an account.

Logging Out

To log out of the Trimble ID, select your username or the downward arrow as shown above. This displays your user email address and a Sign Out button.

Click Sign Out.

Note - If you do not create a Trimble Identity account, you will not be able to use some features including the latest calculations, reports and circuit management tools.

Trimble FastTest

End of Support

The final day of Trimble FastTest desktop and mobile device support is 30th November 2021. Trimble FastTest desktop and mobile device applications will no longer be supported or available for download beyond this date.

The next generation of inspection and testing software, NAPIT FastTest, is out now!

For further information about NAPIT FastTest, the discontinuation of Trimble FastTest and much more, click [here](#).

System Requirements

Minimum Specifications

These specifications refer to the minimum specifications required to use the ProDesign suite of products.

Computer (desktop or laptop)

Minimum PC and system requirements are:

- **Processor:** Intel Core i5 processor or better
- **RAM:** Minimum 8 GB
- **Hard Disk Space:** 20 GB free
- **Monitor:** 1366x768 or better (min 256 colours)
- **Network:** 1GB (wireless network connections may reduce performance)
- **Printer:** Must be on the Microsoft 'Hardware Compatibility List' and drivers fully updated
- Mouse
- Reliable Internet access will be required for some functionality

Minimum PC and system requirements for Trimble ProDesign 3D are as specified by [AutoDesk REVIT](#)

Operating Systems

The following operating systems (with latest updates applied) are supported:

- Microsoft Windows 10, version 1909 and above (32- or 64-bit).
 - Note: For ProDesign 3D users, please see also Revit system requirements (64-bit operating system etc.)
- Microsoft Windows Server 2012 and above (FastTest network installation)

Additional Requirements

- NTFS file system required - not FAT32
- ProDesign suite applications must not be installed on a compressed drive
- Occasionally some users may encounter issues with particular configurations of antivirus and/or firewall software
- ProDesign suite applications are designed to install locally, not over a network

Information in this document is subject to change without notice and does not represent an assurance of liability on the part of Amtech Group Ltd, a Trimble Company. Amtech Group Ltd reserves the right to enhance or add new features which may not always be reflected in the manual supplied.

The software described in this document is furnished under a licence agreement and may be used or copied in accordance with the terms of the agreement.

It is against the law to copy the software except as specifically allowed in the licence agreement. No part of this manual may be reproduced or transmitted in any form or by any means, electronic or mechanical, including photocopying and recording, for any purpose, without the express permission of Amtech Group Ltd.

Microsoft and Windows are either registered trademarks or trademarks of Microsoft Corporation in the United States and/or other countries. All other trademarks are the property of their respective owners.

Copyright and trademarks

© 2021, Trimble Inc. All rights reserved.

Trimble, and the Globe & Triangle logo are trademarks of Trimble Inc., registered in the United States and in other countries.