

Trimble Software

Release Notes

FastTest 2018.0.4

ProDesign 2020.0.0

ProDesign 3D 2020.0.0

Protect 2020.0.0

Single Cable 2020.0.0

Powernet 2020.0.0

mep.trimble.co.uk
01908 608833



We're here to help...

Receive the backing of a unique technical support service from a team of qualified engineers in the industry who understand your business and your specific needs.

If you don't already benefit from our technical support call us now on 0800 028 28 28 or visit mep.trimble.co.uk

Are you already a member?

If you have any queries please contact our PremierCare Support Team on 01908 608833 (selected option 1) or email amtech-support@trimble.com

Activation

To activate your software call 01908 608833.

Training

For information on all our training courses visit the training area of our website at mep.trimble.co.uk/training

Contents

System Requirements.....	4
Installation	5
Desktop installation	5
Activating your software.....	5
Software Upgrade	8
Automatic Updates	9
Technical Assistance.....	9
Product Update.....	10
Create a Trimble Login ID.....	10
FastTest (Patch 4).....	11
Trimble ProDesign 2020.....	12
Trimble ProDesign 3D 2020	14
Protect	16
PowerNet.....	16
Single Cable.....	16
Content Data update	17

System Requirements

These specifications refer to the minimum specifications across our range of software applications.

Computer (desktop or laptop)

Minimum PC and system requirements are:

- **Processor:** Intel Core i5 processor or better
- **RAM:** Minimum 8 GB
- **Hard Disk Space:** 20 GB free
- **Monitor:** 1366x768 or better (min 256 colours)
- **Network:** 1GB (wireless network connections may reduce performance)
- **Printer:** Must be on the Microsoft 'Hardware Compatibility List' and drivers fully updated
- Mouse
- Reliable Internet access will be required for some functionality

Minimum PC and system requirements for Trimble ProDesign 3D are as specified by [AutoDesk REVIT](#)

Operating Systems

The following operating systems (with latest updates applied) are supported:

- Microsoft Windows 8.1 (all editions excluding RT) or above (32 and 64 bit)
- Microsoft Windows 10, version 1607 and above (32- or 64-bit).
- Note: For ProDesign 3D users, please see also Revit system requirements (e.g. 64-bit operating system required)
- Microsoft Windows Server 2012 and above (FastTest network installation)

Prerequisites

- An NTFS file system must be used (not FAT32)
- Our software cannot be installed to a compressed drive
- Antivirus and firewall security software should be disabled prior to the installation
- The installation process is designed to run locally, not over a network

Installation

Desktop installation

See System Requirements for details of supported versions. You will need your licence number.

To install from a download:

- Ensure that you are a local machine administrator.
- Close all open applications, including virus checkers, if running, before starting the installation.
- Download the installer using the link provided. Save the file to your PC.
- Double click on the downloaded file to extract the installation files.
- Setup should start automatically.
- Setup will run. Follow on-screen instructions.

To install from a DVD (only supplied on request):

- Ensure that you are a local machine administrator.
- Close all open applications, including virus checkers, if running, before starting the installation.
- Insert the Trimble Software DVD in your disk drive.
- Setup should start automatically. Setup will run from the DVD. Follow on-screen instructions.

Concurrent Licence Users

Installation instructions can be found in the 'Installation Guides' folder on the installation DVD or information can be found at <http://www.amtech.co.uk/support/documents>.

A new licensing key may be required for your server.

Please contact our Activation Department 01908 608833 or amtech-licensing@trimble.com for further information.

Activating your software

Our software is sold as a single user, single installation licence unless otherwise specified in your licence agreement. The software may be installed and activated on a single computer. Multi-user licence agreements will allow the software to be installed and activated on a specified number of computers.

The software is protected and requires activation before unrestricted use. Before activation there will be full functionality but the message "DEMONSTRATION ONLY" will be printed on all documents.

You will receive reminders to activate the software. However, after 30 days the software must be activated.

How do I activate my software?

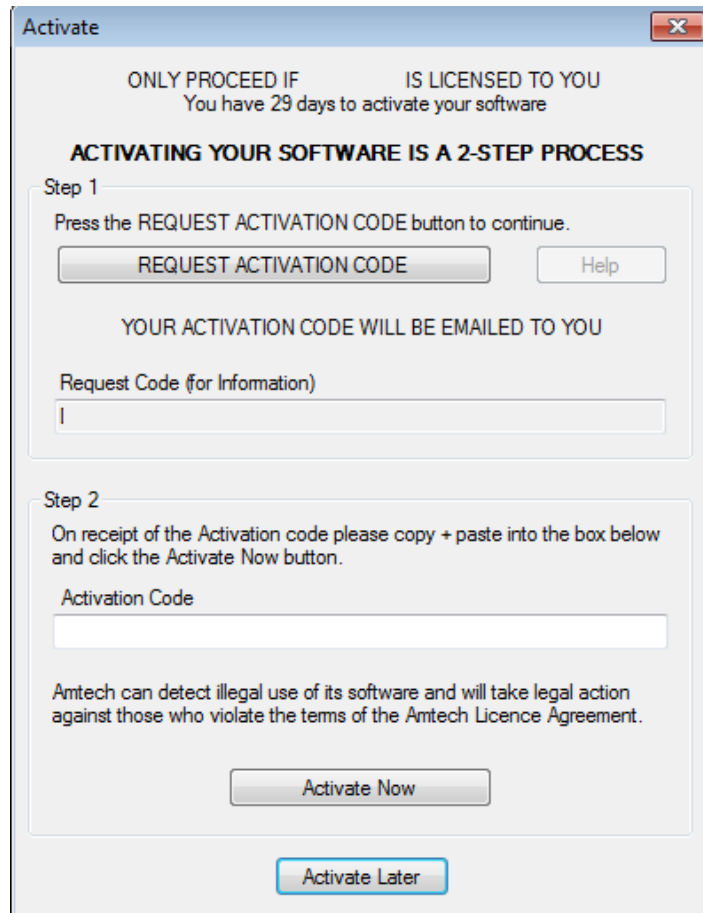
Activating your new software is a two-step process

Step 1 - Send your 'Request Code'

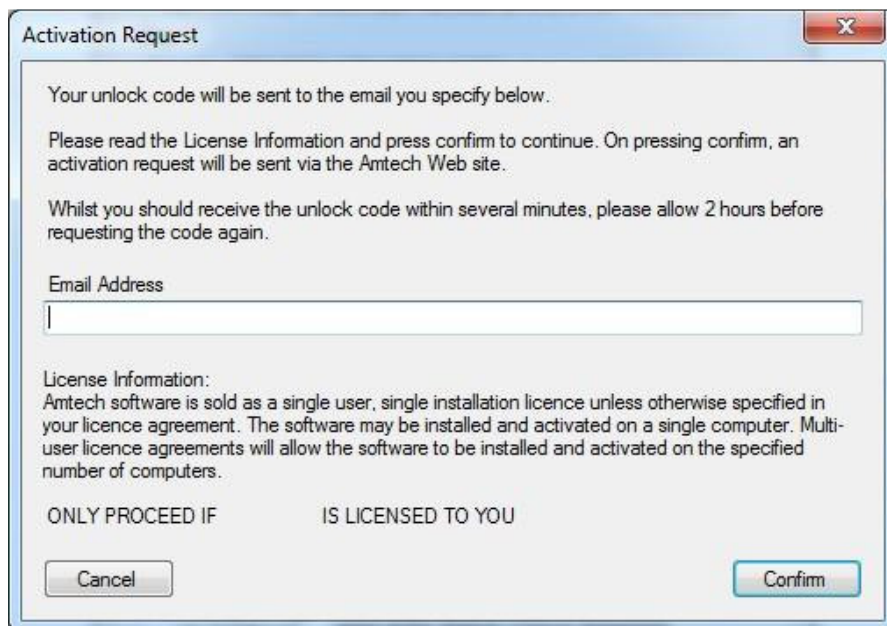
The preferred method of activation is to use the 'REQUEST ACTIVATION CODE' button which sends your 'Request Code' to us electronically. An email auto-responder will check to ensure that your company is the registered purchaser of the software and that there is a user licence available. The auto-responder operates 24 hours a day seven days per week, giving prompt response any time of day.

The Activate dialog box may appear at start-up and various other times indicating how many days you have left.

If the dialog box doesn't appear automatically then it can be accessed by going to the 'Support' menu and selecting 'Activate software'



Click on the 'REQUEST ACTIVATION CODE' button.



On pressing the 'Confirm' button an activation request will be sent via our website. The email response will be sent to the address entered on the Activation Request dialog.

Users who are unable to activate electronically may call the Activation Hotline on 01908 608833 (Monday to Friday 9am – 5pm). A support representative will undertake the security checks manually and then, if appropriate, authorise and issue an unlock code.

Please note: that manual activation process may take several minutes. We strongly suggest that you use the email method if possible as the process of dictating and recording a long code by phone is open to transcription errors.

Telephone calls are recorded to help prevent fraud.

Step 2 - Receive your 'Activation Code' and activate your software

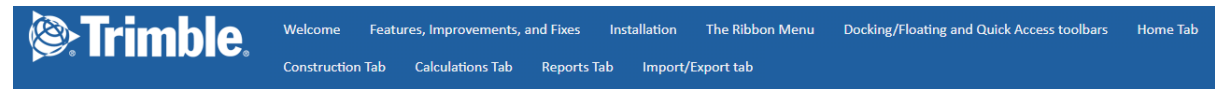
Check your email inbox. If you have not received your activation code by email after a few minutes then check your email system's junk/spam inbox in case the message has been re-directed to there. When you receive your 'Activation code' you must enter this into the lower box. Use copy and paste functions if possible to eliminate transcription errors.

If you have received your activation code by phone enter it into the lower box. Be sure to type it accurately. The majority of the support problems relating to activation are due to incorrectly recorded or mistyped activation codes.

Then click on the 'Activate Now' button to complete the process.

Software Upgrade

This booklet is designed to outline the changes to your software. Further details can be found in the software help system and electronic manual. These can be accessed via the software 'Help' menu.



Welcome to the ProDesign Online Help
The place to find user information, FAQs, and more

About ProDesign

The ProDesign software gives you the following:

- Fast, accurate design calculations to *BS 7671:2018*
- Produce schematic drawings quickly and easily
- 'What if' scenarios—try different ideas with a click of the mouse
- Verify existing sites to comply with industry standards
- Comprehensive range of high quality reports
- Extensive import and export
- Save reports and schematics as PDF files

Where Do I Begin?

- 18th Edition and what's new
- Installing ProDesign
- Frequently asked questions
- Glossary
- Trimble Training
- Trimble PremierCare
- End User License Agreement

Automatic Updates

Our software can automatically check whether a suitable web update is available. If an update is available then the automatic update feature will offer to download and install it for you. Our Automatic Update feature is available in all desktop software products (i.e. non Mobile products). We recommend checking for updates as soon as you have installed your software. You can initiate an update check at any time by selecting the 'Support' menu, selecting the 'Check for Updates' option and clicking on the 'Check Now' button.

In order to be quickly informed of any appropriate web updates for your software in the future you should ensure that the 'Check for Updates' feature is always enabled.

The software allows separate updates of data and software giving customers the ability to have more frequent data updates.

Availability of Web Updates

In order to be able to receive a web update you must have:

- A current PremierCare agreement for the specific application
- Registered your software on our website
- Internet access

Technical Assistance

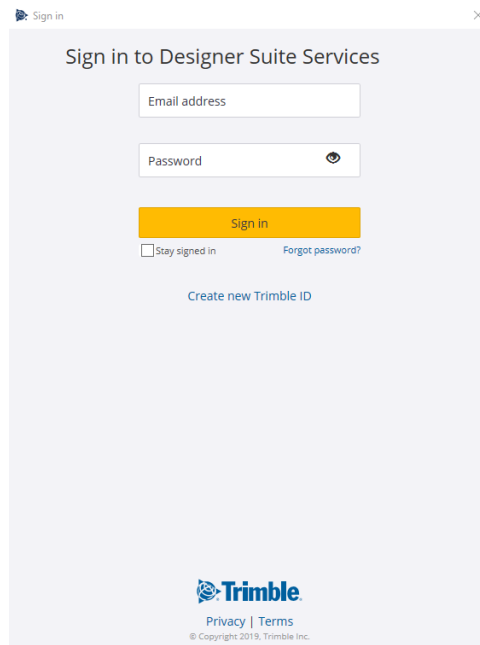
Our Technical Support offers a support tool which allows Support Engineers to view and control users' machines remotely with their permission.

All our applications have a menu option link to the Support web page, which has a direct link to the Assistance login page.

Product Update

Create a Trimble Login ID

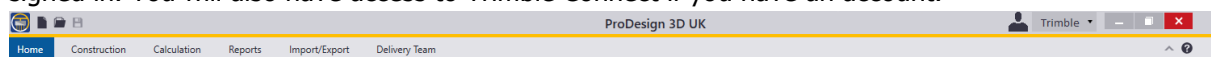
When you first open the ProDesign, SingleCable, Protect or ProDesign 3D software, you are prompted to sign into the Trimble Login Screen.



Enter your Trimble Login information as required, if you don't have an account yet select "Create new Trimble ID". Fill in your details and follow the instructions on this screen.

Note - Select the Stay signed in check box so next time you don't have to sign in again.

Once you are signed in, note that your user name appears in the toolbar to confirm you are signed in. You will also have access to Trimble Connect if you have an account.



Log out

To log out of the Trimble ID, select your user name or the downward arrow as shown above. This displays your user email address and a Sign Out button. Click Sign Out.

Note - If you do not create an account, you will not be able to use our new Trimble Services.

What are Trimble Services?

ProDesign is moving towards being a cloud-based service application as is all our software. This is to help ensure that you have access to the latest updates of the software without needing to install a new version or patch for the software. If you don't want to use the new Trimble Services and instead want to use the local calculation, see Application Settings / Calculations in the help file.

FastTest (Patch 4)

FastTest is an Inspection and Testing electrical certification software solution. That is very easy to use, the certificates on screen are exactly like the paper ones on your desk, simply fill in the certificate on screen and print it out.

For a summary of all the updates made to FastTest, please see the list below.

Issue Type	Summary
Update	<p>Emergency Lighting Certificate and ELIT update Update the Emergency lighting certificate and ELIT to include additional fields to the facilities field to align with 5266-1.</p>
Updates	<p>Domestic Fire Certificate Updated Update the domestic fire UI and Reports to align with BS5839-6:2019 Please Note the following about your fire certificate Please note that all existing Master Fire certificate will print the previous regulation year version of the Fire Certificate, that the Certificate was generated in but the UI I will show the New Regulation numbers. All draft Fire Certificate will show the New UI and also printed these certificates with the new regulation numbers. Once Mastered the certificate will show the new Regulation year.</p>
Updates	<p>Fire Certificate Updated Update the some of the fire certificate UI to align with the latest fire regulation. Please Note the following about your fire certificate Please note that all existing Master Fire certificate will print the previous regulation year version of the Fire Certificate, that the Certificate was generated in but the UI I will show the New Regulation numbers. All draft Fire Certificate will show the New UI and also printed these certificates with the new regulation numbers. Once Mastered the certificate will show the new Regulation year.</p>
Improvement	<p>Improved the Amtech Standard (AS) Domestic Electrical Installation Certificate Improvement have been made to the AS Domestic Electrical Installation Certificate for identifying if RCD and AFDD Test Button Operation was N/A.</p>
Improvement	<p>Improved the Wiring code to several Certificate Improved the Wiring code table for cable to align with BS7671: 18th Edition for the following certificates</p> <ul style="list-style-type: none"> • AS-EICR • BS-EICR • AS-EI • BS-EI
Improvement	<p>Security protocol improved to SQL database Improvement have been made to the security protocol control for the SQL to make them even more secure that previously.</p>

For more information on FastTest please visit our website:

<http://mep.trimble.co.uk/fasttest>

Trimble ProDesign 2020

Introduction

Is the UK's leading electrical design software providing full electrical design and calculations to BS 7671.

ProDesign is a powerful, engineer-friendly software that is ideal for projects of all sizes, from houses to airports. ProDesign's many design options provide total control from initial design through commissioning, right up to final completion.

Additional Updates

For a summary of all the updates made to ProDesign 2020, please see the list below.

Type	Summary
Improvement	Function add to the Tap Off Component Add TapOff's "Function" in UI to work in line with the Tap Off schedules
Improvement	Modular Board - Swap behaviour improvements Improvement made to the modular board Swap feature between rails
Improvement	Zooming with mouse wheel for modular board has been improved Improvements made to modular board zoom feature
Improvement	Improvement made to the Distribution board reports if using defined or estimated loads Distribution boards are displayed/printed if the no final loads are attached to the board and it is set to Define Load or estimated load.
Bug	Incorrect cable selection causes a crash Improvement made to the Single core 4F2 cable to resolve issue with incorrect data
Improvement	PD Multicore (5c) in parallel, with integral CPC issue. Improvement made to the UI and Report to correctly identify the CPC arrangement when cables are in Parallel
Bug	ProDesign : 'Divide by Zero' issue for CPD Bug resolved to the some CPD, that created a Divide by zero for some protective device
Improvement	Improvements made to busbar calculation Updates made to the CPC calculation, to better consider the energy let through for busbar and the min CPC size.
Improvement	Trimble ID – improvements made to Error handling system Improvement made to error handling system when working in other region outside the UK when the Region is set outside the UK in windows.
Bug	Switchboard connected downstream of DB Resolved an issue where it was possible to connect a Switchboard downstream of inline UPS connected to a Distribution board.
Bug	Busbar Protective device settings not appearing on protective device report In some scenarios the Protective device was not appearing in the Protective Device report only.
Bug	L1 L2 L3 in reports are mixed up Resolved an issue on the Distribution board report where the circuit number and ways were not ordering correctly

Improvement	<p>Show UPS connected load</p> <p>The UPS connected & output Rated Current load is included in the UPS Parameter information to help ensure the UPS current is considered.</p>
Improvement	<p>Improvement made to Service calculation</p> <ul style="list-style-type: none"> • Improvement made to BICC data when installed in ductway • Removed the -1 issue that occurred for some installation method when installed in ground • Updated the Diversity calculation • Improved lighting load classification calculation • Update an incorrect UPS message appearing in the Services

Some of these changes can be seen by visiting our website: <http://mep.trimble.co.uk/prodesign>

Trimble ProDesign 3D 2020

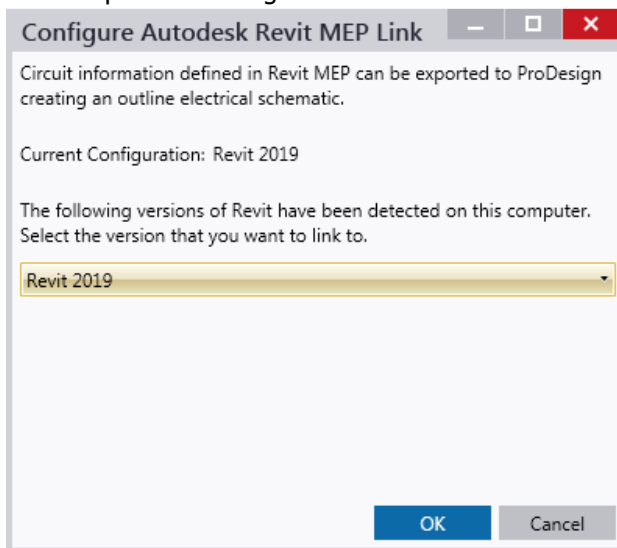
Intro

Trimble ProDesign 3D brings the same ProDesign calculation engine to the Autodesk Revit 2016 (and newer) 3D environments.

Setup

During the installation of ProDesign 3D, customers will be prompted to configure ProDesign 3D into the required Revit version that is available on the machine. Customers can choose to do this at later date following one of the step below.

1. From within the ProDesign software, navigate to **Configure ProDesign 3D** on the Import/Export tab. The following dialog box will appear asking to select which version of Revit to place ProDesign 3D into.



2. The alternative method is to navigate to the ProDesign 3D installation directory (default directory is C:\Trimble2020\ProDesign 3D) and opening the **ConfigureRevitLink.exe** file.
Doing this will open the same dialog as 1 above.

Updates

The ProDesign 3D 2020 update brings a huge improvement to the already existing Circuit Routing feature introduced last year. The new improvements include:

Cable length Management

1. **Automatic Circuit Routing** - Route circuits automatically.
2. **Manual Circuit Routing** - Huge improvement on previous routing, where individual load points can be selected.
3. **Circuit Settings** - Set the circuit dimension and weight of the circuit. This is automatically obtained from the ProDesign 3D database, but an override can be set where required.
4. **Route Circuit as Ring** - Set the circuit as a ring circuit to route back to the distribution board.

Containment Management

1. **Containment Settings** - Specify settings on an individual containment basis.
2. **Assign circuits to containment** - Use any of the routing tools to assign circuits to containment.

3. **Default Containment Settings** - Set defaults for containment in terms of Stack level, and defined spare.
4. **Service Type Restrictions** - Specify the service type of containment to restrict circuit types running through it to avoid mixed services (e.g. Power and Data).
5. **Calculate Containment capacity** – Calculate if your containment is correctly sized both for weight and physical size. This information is provided in an error and warning dialog that will help you find the issue in your model.

Drawing Management system

1. **Annotation Tags** - Set up parameters against containment, to list information of all circuits running through the containment selected.
2. **Show Routes / Copy Routes** - Show routes temporarily on the view, or copy them for issuing on drawings.

Refer to the Help File for more information on how to get started with this feature.

Additional Updates

For a summary of all the updates made to ProDesign 3D 2020, please see the list below.

Issue Type	Summary
Updates	Calculations improvements Refer to the ProDesign section for Calculation updates.
Improvement	ProDesign 3D - Modular Board Improvement for internal cable length in voltage drop calculation. Improvements made to ProDesign 3D to consider internal board cable length in Voltage drop calculation
Bug	When a user converts a distribution board to a modular board, the 1-phase final circuits are converted to devices that take up 3 space units wide (1 way) Resolved an issue in Modular boards in ProDesign 3D where addition space where taken up for single phase circuits
Bug	RCBO and RCD reporting no Neutral conductor When a user adds either an RCBO or a separate RCD protective device, the calculation shows an error message that an RCD device is not suitable for the component as it has no neutral conductor
New Feature	kW column in Data Entry Panel add in ProDesign3D Add the kW Colum to the data Entry panel in ProDesign 3D

For more information on the features identified, please see the relevant section within the help file.

Protect

Protect is so easy to use, you don't need to be a protection expert to use it. The software contains a database with data on thousands of protective devices. This is data direct from, and approved by, leading manufacturers so you can be confident in its accuracy. This is particularly important as so many adjustable breakers are being used these days – it is essential to get these set correctly at the outset. Nobody wants to revisit jobs to sort out nuisance tripping that could so easily have been avoided at the design stage.

Protect also, allows you to use the new Trimble ID, for more information on this see [Trimble ProDesign 2020](#)

For more information on Protect please visit our website:
<http://mep.trimble.co.uk/protect>

PowerNet

A powerful graphical short circuit analysis program for the calculation of short circuit currents to IEC 60909 and BS 7639. PowerNet deals with fault currents in both High and Low Voltage distribution systems. Quick and easy to use it enables studies to be carried out cost effectively on new and existing systems.

No changes have been implemented to this software.

For more information on PowerNet please visit our website:
<http://mep.trimble.co.uk/powernet>

Single Cable

SingleCable is a cable calculation software that is extremely simple to use and provides results in seconds, whether the cable is a sub-main feeder or final circuit. Once calculated, the program also enables you to look at the results for the next cable size larger or smaller, and the same facility is available for the protective device. This is most useful for looking at 'what if' situations, a luxury not available when doing calculations manually.

SingleCable also, allows you to use the new cloud services for the calculation, for more information on this see [Trimble ProDesign 2020](#).

For more information on SingleCable please visit our website:
<http://mep.trimble.co.uk/singlecable>

Content Data update

Automatic data updates are user defined within the 'Check for Updates' tab under 'Application Settings'. Once applied, a check will be made for a new package upon every launch of the application. If a new package is found, you will be prompted to install it now or later. Once installed, the application will be restarted.

Manual data updates are run at users' discretion. If your application is not set to automatically check for data updates, you can manually check by going to the 'Check for Updates' tab under 'Application Settings' and clicking 'Check Now'. If a new package is found, you will be prompted to install it now or later. Once installed, the application will be restarted.

Section 1	Summary
New Content	Circuit Protective Devices: Hager Schneider Selectivity: Hager
Modified Content	Circuit Protective Devices: Hager Proteus Schneider See Section 2 for details
Section 2	Detailed Content Changes
Dorman Smith	
<ul style="list-style-type: none"> • Modified content <ul style="list-style-type: none"> ○ YB1S (ATFM) 32A, YA3S 20A & 32A Icu changed to 30kA. ○ YB1N (FTFM), YB1S (FTFM), YB3N (FTFM) & YB3S (FTFM) made obsolete. ○ YB3N (ATAM), YB3S (ATAM), YA2S, YA2J, YA3J, YA6H (FTFM) 400A Instantaneous trip settings updated. ○ YA3J-E Electronic, YA6H-E 630A & YA6K-E 630A Selective Short Circuit trip settings updated. ○ K series MCB Energy Let Through curves 	
Schneider	
<ul style="list-style-type: none"> • New content – Compact NSXm MCCB with Micrologic 4.1 trip unit. • Modified content – Renamed Compact NSX MCCB Vigi 4 & Vigi 7 trip unit to Micrologic 4.2/4.3 & 7.2/7.3. 	
Dorman Smith - Selectivity Data	
<ul style="list-style-type: none"> • New content – Update of Selectivity data to include (Upstream/Downstream); <ul style="list-style-type: none"> ○ Loadline Electronic ACB / Loadline Electronic & Th/Mag MCCB ○ Loadline Electronic MCCB / Loadline Electronic & Th/Mag MCCB ○ Loadline Th/Mag MCCB / K Series MCB 	
Schneider - Selectivity Data	
<ul style="list-style-type: none"> • New content – Update of Selectivity data to include all data where the Compact NSXm Micrologic 4.1 & Compact NSX MCCB Micrologic 4.2/4.3 & 7.2/7.3 appears as the upstream or downstream device, as per the Schneider Complementary Technical Information 2019 	

ABB - Back Up Data

- Modified content – Bug fix affecting Tmax XT MCCB and MCBs.

Hager - Back Up Data

- Modified content – Complete update of all Hager Back Up data.

Schneider - Back Up Data

- New and modified content – Complete update of all Schneider Back Up data, as per the Schneider Complementary Technical Information 2019

Information in this document is subject to change without notice and does not represent an assurance of liability on the part of Amtech Group Ltd, a Trimble Company. Amtech Group Ltd reserves the right to enhance or add new features which may not always be reflected in the manual supplied.

The software described in this document is furnished under a licence agreement and may be used or copied in accordance with the terms of the agreement.

It is against the law to copy the software except as specifically allowed in the licence agreement. No part of this manual may be reproduced or transmitted in any form or by any means, electronic or mechanical, including photocopying and recording, for any purpose, without the express permission of Amtech Group Ltd.

Microsoft and Windows are either registered trademarks or trademarks of Microsoft Corporation in the United States and/or other countries. All other trademarks are the property of their respective owners.

Copyright and trademarks

© 2020, Trimble Inc. All rights reserved.

Trimble, and the Globe & Triangle logo are trademarks of Trimble Inc., registered in the United States and in other countries.