

Trimble Software

Release Notes

mep.trimble.co.uk
01908 608833



We're here to help...

Receive the backing of a unique technical support service from a team of qualified engineers in the industry who understand your business and your specific needs.

If you don't already benefit from our technical support call us now on 0800 028 28 28 or visit mep.trimble.co.uk

Are you already a member?

If you have any queries please contact our PremierCare Support Team on 01908 608833 or email amtech-support@trimble.com

Activation

To activate your software call 01908 608833.

Training

For information on all our training courses visit the training area of our website at mep.trimble.co.uk/training

Contents

System Requirements.....	4
Installation	5
Desktop installation	5
Activating your software.....	5
Software Upgrade	8
Automatic Updates	9
Technical Assistance.....	9
Product Update.....	10
Trimble ProDesign 2018.....	10
Trimble ProDesign 3D.....	14
Protect	17
PowerNet.....	18
Single Cable.....	19
Content Data update	22
ProDesign Domestic	22

System Requirements

These specifications refer to the minimum specifications across our range of software applications.

Computer (desktop or laptop)

Minimum PC and system requirements are:

- Intel Core i3 processor (2.0 GHz processor) or equivalent
- 4GB RAM
- 1.5GB free hard disk space
- Mouse
- Monitor: 1024x768 resolution – min 256 colours (recommended 1280x1024) Recommended screen font size 96 DPI (100%).

Minimum PC and system requirements for Trimble ProDesign 3D are as specified by [AutoDesk REVIT](#)

Operating Systems

The following operating systems (with latest updates applied) are supported:

- Microsoft Windows 7 SP1 Home Premium or above (32 and 64 bit)
- Microsoft Windows 8.1 (all editions excluding RT) or above (32 and 64 bit)
- Microsoft Windows 10 (32 and 64 bit)
- Microsoft Windows Server 2008 and above (FastTest network installation)

Prerequisites

- An NTFS file system must be used (not FAT32)
- Our software cannot be installed to a compressed drive
- Antivirus and firewall security software should be disabled prior to the installation
- The installation process is designed to run locally, not over a network

Installation

Desktop installation

See System Requirements for details of supported versions. You will need your licence number.

To install from a download:

- Ensure that you are a local machine administrator.
- Close all open applications, including virus checkers, if running, before starting the installation.
- Download the installer using the link provided. Save the file to your PC.
- Double click on the downloaded file to extract the installation files.
- Setup should start automatically.
- Setup will run. Follow on-screen instructions.

To install from a DVD:

- Ensure that you are a local machine administrator.
- Close all open applications, including virus checkers, if running, before starting the installation.
- Insert the Trimble Software DVD in your disk drive.
- Setup should start automatically. Setup will run from the DVD. Follow on-screen instructions.

Concurrent Licence Users

Installation instructions can be found in the 'Installation Guides' folder on the installation DVD.

A new licensing key may be required for your server.

Please contact our Activation Department 01908 608833 or amtech-licensing@trimble.com for further information.

Activating your software

Our software is sold as a single user, single installation licence unless otherwise specified in your licence agreement. The software may be installed and activated on a single computer. Multi- user licence agreements will allow the software to be installed and activated on a specified number of computers.

The software is protected and requires activation before unrestricted use. Before activation there will be full functionality but the message "DEMONSTRATION ONLY" will be printed on all documents.

You will receive reminders to activate the software. However, after 30 days the software must be activated.

How do I activate my software?

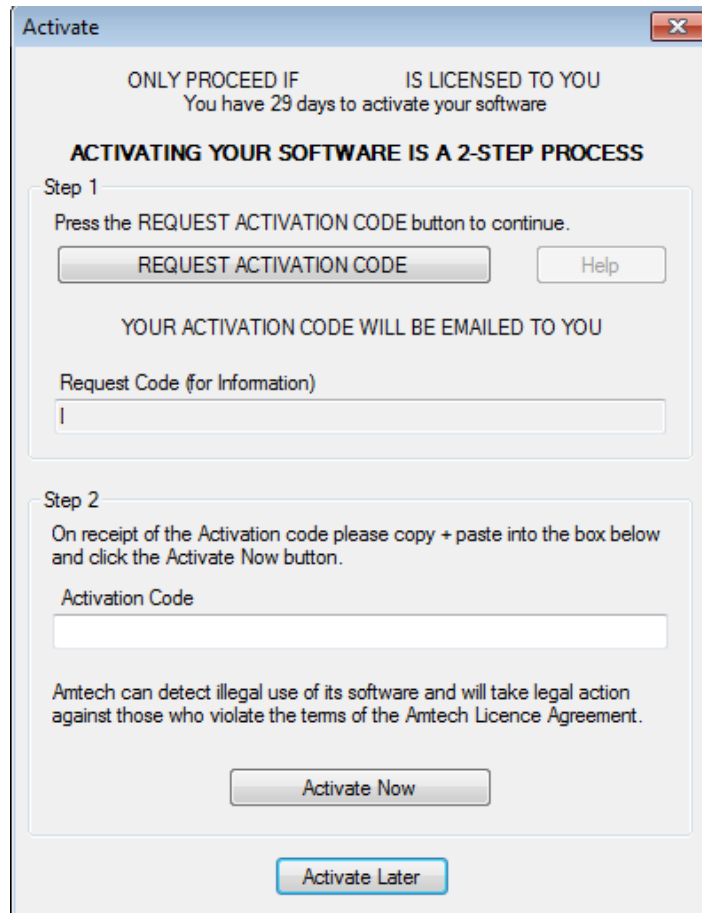
Activating your new software is a two-step process

Step 1 - Send your 'Request Code'

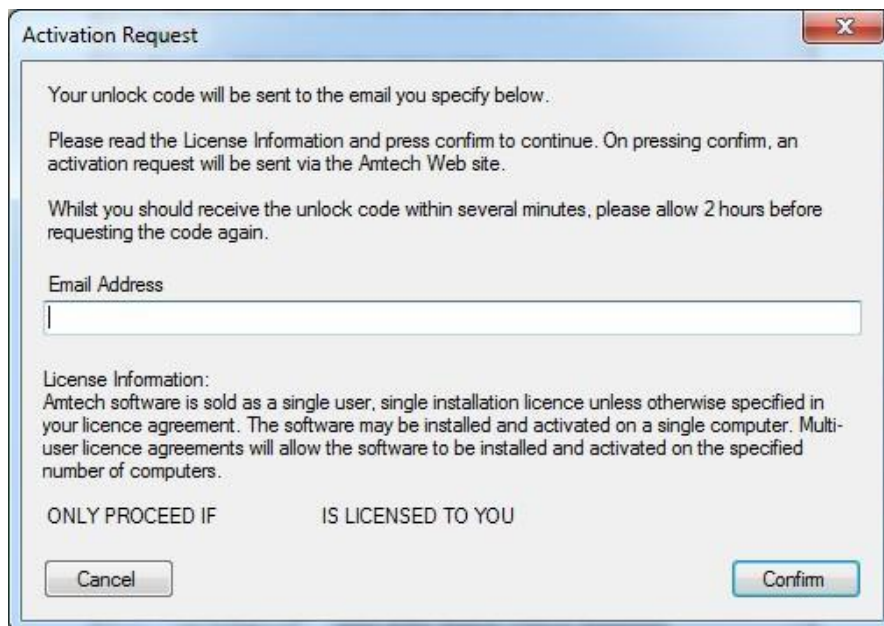
The preferred method of activation is to use the 'REQUEST ACTIVATION CODE' button which sends your 'Request Code' to us electronically. An email auto-responder will check to ensure that your company is the registered purchaser of the software and that there is a user licence available. The auto-responder operates 24 hours a day seven days per week, giving prompt response any time of day.

The Activate dialog box may appear at start-up and various other times indicating how many days you have left.

If the dialog box doesn't appear automatically then it can be accessed by going to the 'Support' menu and selecting 'Activate software'



Click on the 'REQUEST ACTIVATION CODE' button.



On pressing the 'Confirm' button an activation request will be sent via our website. The email response will be sent to the address entered on the Activation Request dialog.

Users who are unable to activate electronically may call the Activation Hotline on 01908 608833 (Monday to Friday 9am – 5pm). A support representative will undertake the security checks manually and then, if appropriate, authorise and issue an unlock code.

Please note: that manual activation process may take several minutes. We strongly suggest that you use the email method if possible as the process of dictating and recording a long code by phone is open to transcription errors.

Telephone calls are recorded to help prevent fraud.

Step 2 - Receive your 'Activation Code' and activate your software

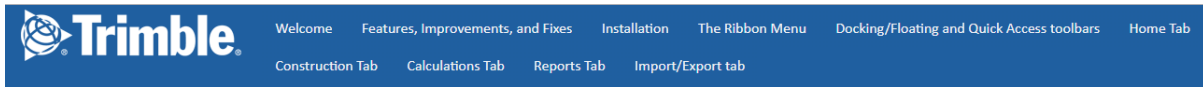
Check your email inbox. If you have not received your activation code by email after a few minutes then check your email system's junk/spam inbox in case the message has been re-directed to there. When you receive your 'Activation code' you must enter this into the lower box. Use copy and paste functions if possible to eliminate transcription errors.

If you have received your activation code by phone enter it into the lower box. Be sure to type it accurately. The majority of the support problems relating to activation are due to incorrectly recorded or mistyped activation codes.

Then click on the 'Activate Now' button to complete the process.

Software Upgrade

This booklet is designed to outline the changes to your software. Further details can be found in the software help system and electronic manual. These can be accessed via the software 'Help' menu.



Welcome to the ProDesign Online Help
The place to find user information, FAQs, and more

About ProDesign

The ProDesign software gives you the following:

- Fast, accurate design calculations to *BS 7671:2018*
- Produce schematic drawings quickly and easily
- 'What if' scenarios—try different ideas with a click of the mouse
- Verify existing sites to comply with industry standards
- Comprehensive range of high quality reports
- Extensive import and export
- Save reports and schematics as PDF files

Where Do I Begin?

- [18th Edition and what's new](#)
- [Installing ProDesign](#)
- [Frequently asked questions](#)
- [Glossary](#)
- [Trimble Training](#)
- [Trimble PremierCare](#)
- [End User License Agreement](#)

Automatic Updates

Our software can automatically check whether a suitable web update is available. If an update is available then the automatic update feature will offer to download and install it for you. Our Automatic Update feature is available in all desktop software products (i.e. non Mobile products). We recommend checking for updates as soon as you have installed your software. You can initiate an update check at any time by selecting the 'Support' menu, selecting the 'Check for Updates' option and clicking on the 'Check Now' button.

In order to be quickly informed of any appropriate web updates for your software in the future you should ensure that the 'Check for Updates' feature is always enabled.

The software allows separate updates of data and software giving customers the ability to have more frequent data updates.

Availability of Web Updates

In order to be able to receive a web update you must have:

- A current PremierCare agreement for the specific application
- Registered your software on our website
- Internet access

Technical Assistance

Our Technical Support offers a support tool which allows Support Engineers to view and control users' machines remotely with their permission.

All our applications have a menu option link to the Support web page, which has a direct link to the Assistance login page.

Product Update

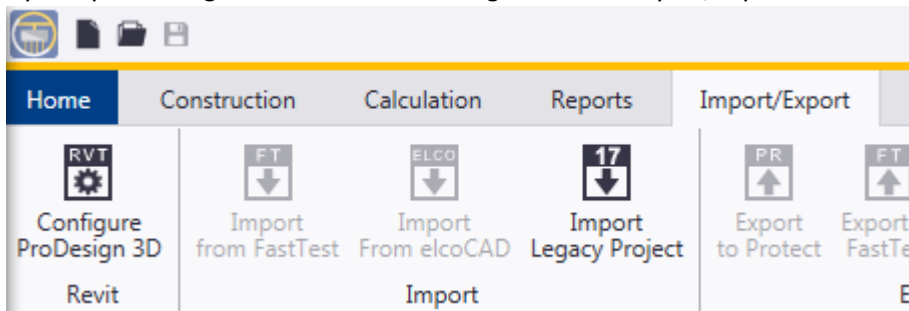
Trimble ProDesign 2018

With the 2018 release, ProDesign has been updated to reflect the changes made to BS7671:2018 IET Wiring Regulations Eighteenth Edition which affect the ProDesign calculations.

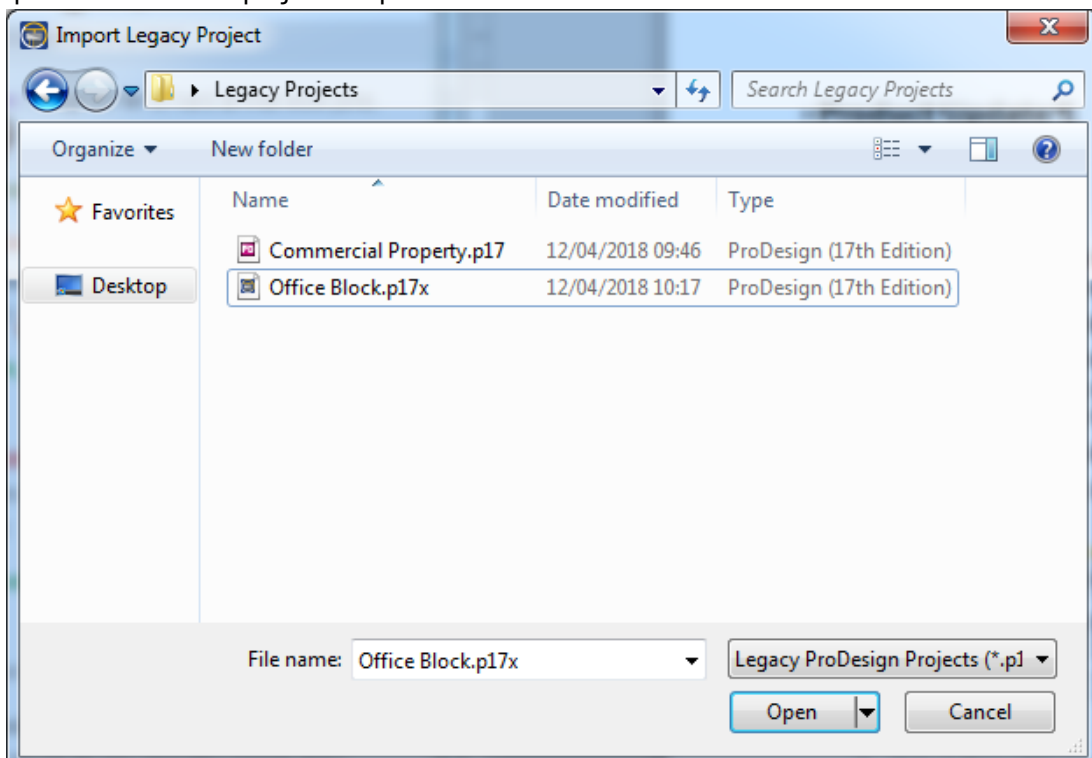
With the new regulation change, comes a new ProDesign file extension, .p18x. All supported customers benefit from being able to Import Legacy Projects (files with .p17 or .p17x file extensions) allowing them to be updated to 18th Edition standards.

To **import a legacy project** follow these simple steps:

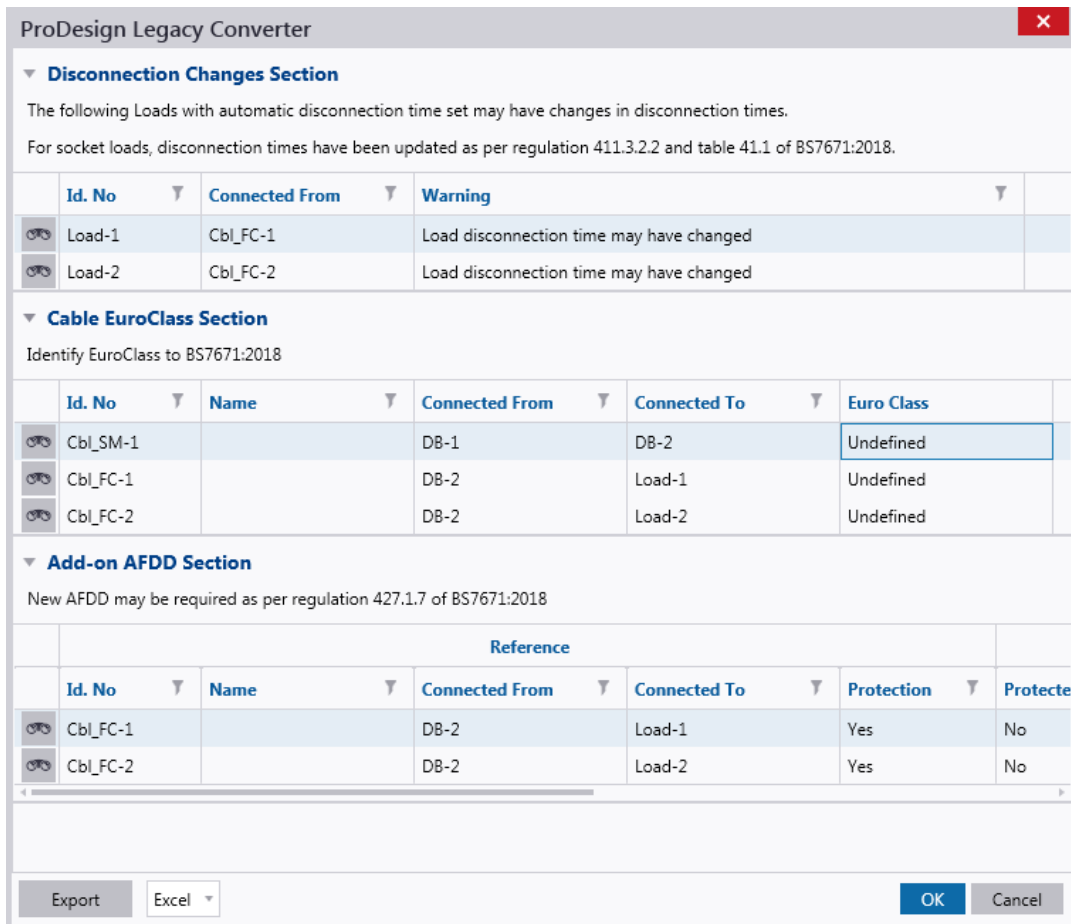
1. Open up ProDesign 18th Edition and Navigate to the Import/Export Tab.



2. Selecting **Import Legacy Project** opens the following dialog box showing only .p17 and .p17x files. Select a project to open.



3. Once selected, the process will begin converting the project to a .p18x file for the 18th Edition. Components that are affected by the 18th Edition regulations are identified in the ProDesign Legacy Converter window:



Certain items can be rectified within the dialog, other items will require to be modified via the ProDesign schematic.

The items that are affected can be exported as an Excel, CSV or PDF file for reference by pressing the Export button, and selecting the file type required from the drop down.

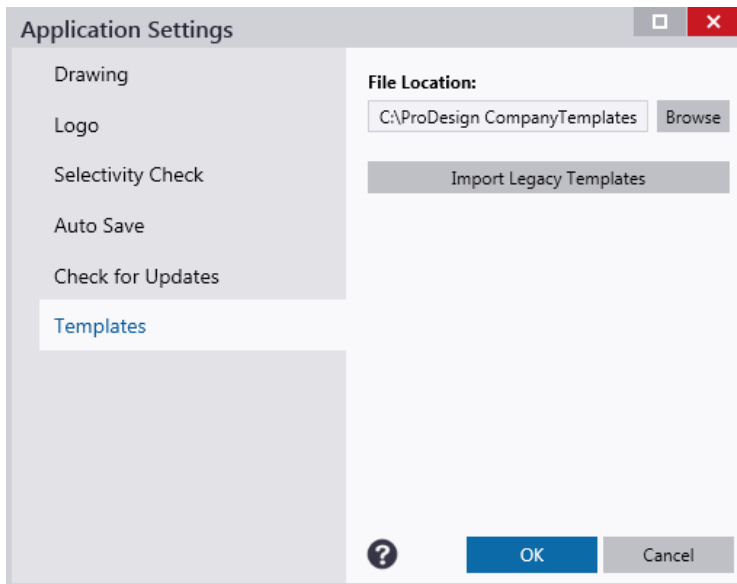
Press **OK** to continue opening the project in ProDesign 2018, or **Cancel** to stop the process.

NB – the project will have to be saved after the conversion to reopen it as an 18th Edition project.

Legacy templates can also be converted for use with ProDesign 2018.

To do this, follow these simple steps:

1. Navigate to the **Application Settings** on the **Home** menu.
2. Navigate to the **Templates** tab, select **Import Legacy Templates** and select the folder containing **.p17t** files for import and select **OK**.



3. If templates are found and imported, a prompt will be shown providing information showing how many templates were found, and how many were imported to the specified file location.



Additional Updates

For a summary of all the updates made to ProDesign 2018, please see the list below.

Type	Summary	ProDesign	ProDesign ME
18 th Edition	Conversion Convert Legacy .p17 and .p17x and template files to 18 th Edition	✓	✓
18 th Edition	Sockets Removed the option to omit RCD if it is 'Identified for use with a particular item of equipment' as per regulation 411.3.3 of BS7671:2018.	✓	
18 th Edition	63A socket load type 63A single phase sockets load type added with maximum automatic disconnection times aligning with regulation 411.3.2.2 of BS7671:2018. RCD not required as per regulation 411.3.3 of BS7671:2018.	✓	
18 th Edition	Euro Classification for Cables Added option in cable dialog for users to define the Euro Classification for cables.	✓	
18 th Edition	AFDD Devices Added ability to select an 'add on' Arc Flash Detection Device (AFDD) to comply with regulation 421.1.7 of BS7671:2018. AFDD also shown on reports.	✓	
18 th Edition	Lighting Requirements Added option to specify lighting circuit as domestic for RCD requirement check.	✓	
18 th Edition	Automatic disconnection time provisions Regulation 419 can be applied to electronic equipment such as a UPS and some Motor load types.	✓	
Feature	Cable Search Users can now search through the available cable types when in the cable dialog to quickly select the required cable.	✓	✓
Improvement	Terminology Change Discrimination changed to Selectivity, and Cascade changed to Backup Protection to align with Part 2 of BS7671:2018.	✓	✓
Improvement	Split final load text Final load and cable information can now be placed separately on the schematic when using Display Results.	✓	✓
Improvement	Property Pane Disconnection time correctly showing.	✓	✓
Improvement	User Interface General Improvements.	✓	✓

These changes can be seen by visiting our website:

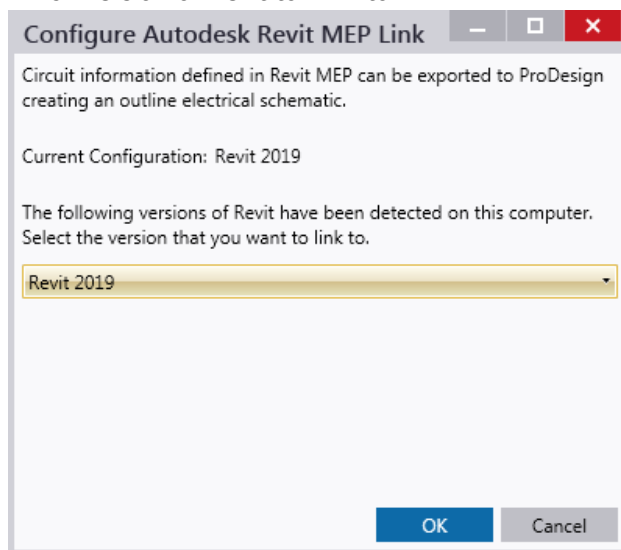
<http://mep.trimble.co.uk/prodesign>

Trimble ProDesign 3D

Trimble ProDesign 3D is a new product that came out in November 2016 offered by Trimble, using the same calculation engine as ProDesign but within the Autodesk Revit 2016, 2017, 2018 and 2019 3D Environments. ProDesign 3D allows the user to have the great features of ProDesign within the Revit environment. This includes data, error dialogs, reporting functionality and protective devices behind ProDesign all still calculating in accordance with BS7671.

Similar to ProDesign, ProDesign 3D customers will need to convert their projects to be calculated in accordance with BS7671:2018. During the installation of ProDesign 3D, customers will be prompted to configure the ProDesign 3D 2018 Revit link. Customers can choose to do this at later date following step 1a or 1b below.

1. Reconfigure the ProDesign3D to Revit link by one of two methods:
 - a. From within the ProDesign software, navigate to **Configure ProDesign 3D** on the Import/Export tab. The following dialog box will appear asking to select which version of Revit to 'link' to.

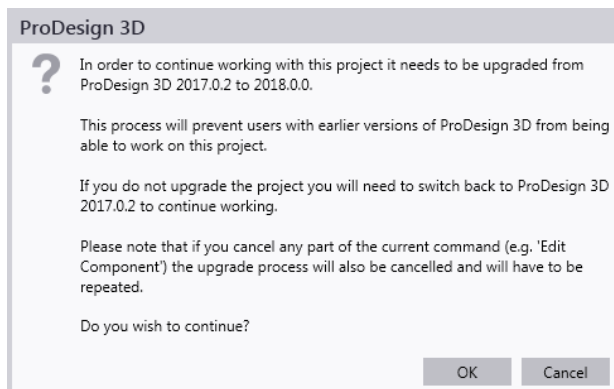


- b. The alternative method is to navigate to the ProDesign 3D installation directory (default directory is C:\Trimble2018\ProDesign 3D) and opening the **ConfigureRevitLink.exe** file. Doing this will open the same dialog as a. above.

To upgrade the project to the 18th Edition regulations please follow the steps below.

2. Open up the Revit project and navigate to the ProDesign 3D tab.
3. Select a button on the ProDesign 3D ribbon (except 'About' or 'Help') to begin the conversion process.

A prompt, similar to the following will appear:



If selecting **OK**, ProDesign 3D will go through the process of upgrading the project to 18th edition. Selecting **Cancel** will stop the process of upgrading the project.

Note: Customers can swap between the different versions of ProDesign 3D (notably between 17th and 18th Edition) if required, by following steps 1a or 1b above for Configuring ProDesign 3D to Revit.

- Once the process is complete, components that are affected by the 18th Edition regulations are identified in the ProDesign Legacy Converter window:

ProDesign Legacy Converter

Disconnection Changes Section
The following Loads with automatic disconnection time set may have changes in disconnection times.
For socket loads, disconnection times have been updated as per regulation 411.3.2.2 and table 41.1 of BS7671:2018.

	Id. No	Connected From	Warning
	Load-1	Cbl_FC-1	Load disconnection time may have changed
	Load-2	Cbl_FC-2	Load disconnection time may have changed

Cable EuroClass Section
Identify EuroClass to BS7671:2018

	Id. No	Name	Connected From	Connected To	Euro Class
	Cbl_SM-1		DB-1	DB-2	Undefined
	Cbl_FC-1		DB-2	Load-1	Undefined
	Cbl_FC-2		DB-2	Load-2	Undefined

Add-on AFDD Section
New AFDD may be required as per regulation 427.1.7 of BS7671:2018

Reference						
	Id. No	Name	Connected From	Connected To	Protection	Protecte
	Cbl_FC-1		DB-2	Load-1	Yes	No
	Cbl_FC-2		DB-2	Load-2	Yes	No

Export Excel ▾ **OK** Cancel

Certain items can be rectified within the dialog, other items will require to be modified using the **Edit Component** button located on the ProDesign 3D ribbon.

The items that are affected can be exported as an Excel, CSV or PDF file for reference by pressing the Export button, and selecting the file type required from the drop down.

Press **OK** to continue opening the project in ProDesign 2018, or **Cancel** to stop the process.

Additional Updates

For a summary of all the updates made to ProDesign 3D 2018, please see the list below.

Issue Type	Summary	ProDesign 3D	ProDesign 3D ME
18 th Edition	Conversion Convert legacy projects to 18 th Edition	✓	✓
18 th Edition	Sockets Removed the option to omit RCD if it is 'Identified for use with a particular item of equipment' as per regulation 411.3.3 of BS7671:2018.	✓	
18 th Edition	63A socket load type 63A single phase sockets load type added with maximum automatic disconnection times aligning with regulation 411.3.2.2 of BS7671:2018. RCD not required as per regulation 411.3.3 of BS7671:2018.	✓	
18 th Edition	Euro Classification for Cables Added option in cable dialog for users to define the Euro Classification for cables.	✓	
18 th Edition	AFDD Devices Added ability to select an 'add on' Arc Flash Detection Device (AFDD) to comply with regulation 421.1.7 of BS7671:2018. AFDD also shown on reports.	✓	
18 th Edition	Lighting Requirements Added option to specify lighting circuit as domestic for RCD requirement check.	✓	
18 th Edition	Automatic disconnection time provisions Regulation 419 can be applied to electronic equipment for some Motor load types.	✓	
Feature	Cable Search Users can now search through the available cable types when in the cable dialog to quickly select the required cable.	✓	✓
Improvement	Terminology Change Discrimination changed to Selectivity, and Cascade changed to Backup Protection to align with Part 2 of BS7671:2018.	✓	✓
Improvement	User Interface General Improvements.	✓	✓

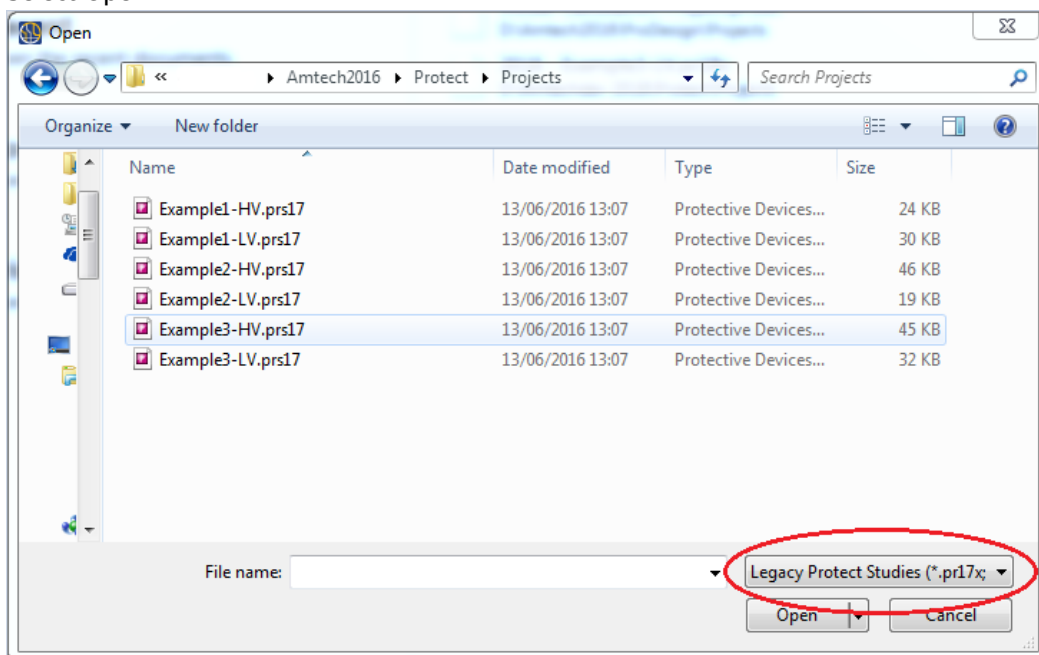
For more information on the features identified, please see the relevant section within the help file.

Protect

Protect is so easy to use, you don't need to be a protection expert to use it. The software contains a database with data on thousands of protective devices. This is data direct from, and approved by, leading manufacturers so you can be confident in its accuracy. This is particularly important as so many adjustable breakers are being used these days – it is essential to get these set correctly at the outset. Nobody wants to revisit jobs to sort out nuisance tripping that could so easily have been avoided at the design stage.

Whilst there are no calculations being performed, to keep in line with other projects, the Protect file extension has been changed to .pr18x. Projects saved with .prs17 and .pr17x file extensions can still be opened by following these simple steps:

1. Open up Protect and navigate to Open from the Home tab.
2. Select **Open from local computer**.
3. From the dialog, change the file type to .prs17, .pr17x from the drop down.
4. Select Open.



5. Save the project.

These changes can be seen by visiting our website:

<http://mep.trimble.co.uk/protect>

PowerNet

A powerful graphical short circuit analysis program for the calculation of short circuit currents to IEC 60909 and BS 7639. PowerNet deals with fault currents in both High and Low Voltage distribution systems. Quick and easy to use it enables studies to be carried out cost effectively on new and existing systems.

No changes have been implemented to this software.

For more information on PowerNet please visit our website:

<http://mep.trimble.co.uk/powernet>

Single Cable

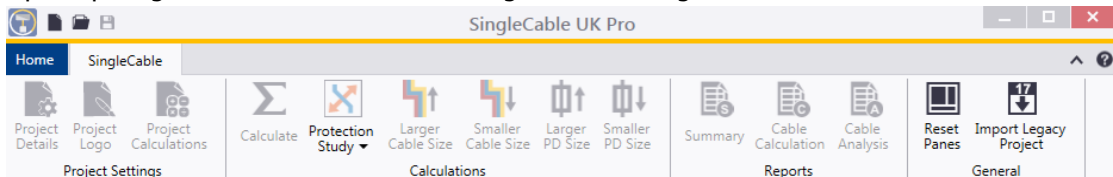
SingleCable is a cable calculation software that is extremely simple to use and provides results in seconds, whether the cable is a sub-main feeder or final circuit. Once calculated, the program also enables you to look at the results for the next cable size larger or smaller, and the same facility is available for the protective device. This is most useful for looking at 'what if' situations, a luxury not available when doing calculations manually.

As with ProDesign, the 2018 SingleCable release has been updated to reflect the changes made to BS7671:2018 IET Wiring Regulations Eighteenth Edition which affect the SingleCable calculations.

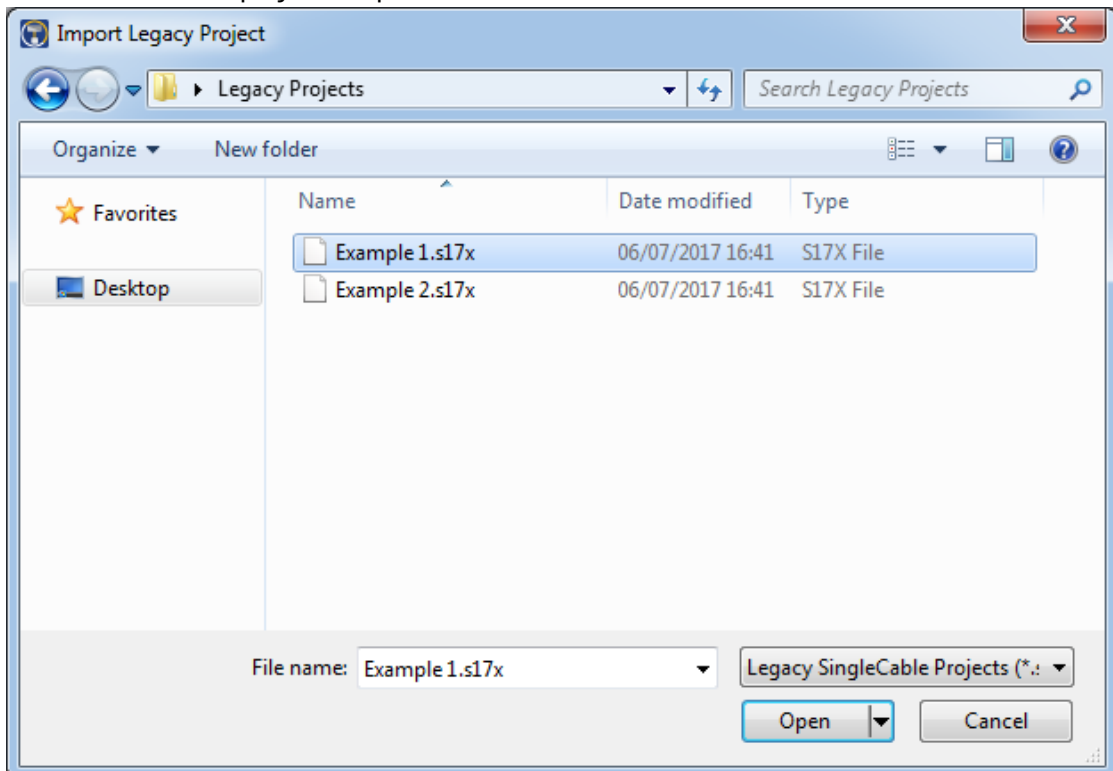
With the new regulation change, comes a new SingleCable file extension, .s18x. All supported customers benefit from being able to Import Legacy Projects (files with .s17 or .s17x file extensions) allowing them to be updated to 18th Edition standards.

To **import a legacy project** follow these simple steps:

1. Open up SingleCable 18th Edition and Navigate to the SingleCable Tab.



2. Selecting **Import Legacy Project** opens the following dialog box showing only .s17 and .s17x files. Select a project to open.



3. Once selected, the process will begin converting the project to a .p18x file for the 18th Edition. Components that are affected by the 18th Edition regulations are identified in the ProDesign Legacy Converter window:

SingleCable Legacy Converter ✖

Disconnection Changes Section

The following Loads with automatic disconnection time set may have changes in disconnection times.
For socket loads, disconnection times have been updated as per regulation 411.3.2.2 and table 41.1 of BS7671:2018.

Id. No	Warning
Lighting Upstairs	Load disconnection time may have changed

Cable EuroClass Section

Identify EuroClass to BS7671:2018

Id. No	Name	Euro Class
Cbl_FC-8		Undefined

Domestic Lighting Section

Identify Domestic lighting and RCD requirements. Please see regulation 411.3.4 of BS7671:2018.

Id. No	Name	Domestic Lighting
Lighting Upstairs		No

Add-on AFDD Section

New AFDD may be required as per regulation 427.1.7 of BS7671:2018

Reference				Add-on AFDD		
Id. No	Name	Protection	Protected	Manufacturer	Family	Type
Consumer Unit Way 4		Yes	No			

Export Excel ▾ OK Cancel

Certain items can be rectified within the dialog, other items will require to be modified via the SingleCable main interface.

The items that are affected can be exported as an Excel, CSV or PDF file for reference by pressing the Export button, and selecting the file type required from the drop down.

Press **OK** to continue opening the project in SingleCable 2018, or **Cancel** to stop the process.

NB – the project will have to be saved after the conversion to reopen it as an 18th Edition project.

Additional Updates

For a summary of all the updates made to SingleCable 2018, please see the list below.

Type	Summary	ProDesign	ProDesign ME
18 th Edition	Conversion Convert Legacy .s17 and .s17x files to 18 th Edition	✓	✓
18 th Edition	Sockets Removed the option to omit RCD if it is 'Identified for use with a particular item of equipment' as per regulation 411.3.3 of BS7671:2018.	✓	
18 th Edition	63A socket load type 63A single phase sockets load type added with maximum automatic disconnection times aligning with regulation 411.3.2.2 of BS7671:2018. RCD not required as per regulation 411.3.3 of BS7671:2018.	✓	
18 th Edition	Euro Classification for Cables Added option in cable dialog for users to define the Euro Classification for cables.	✓	
18 th Edition	AFDD Devices Added ability to select an 'add on' Arc Flash Detection Device (AFDD) to comply with regulation 421.1.7 of BS7671:2018. AFDD also shown on reports.	✓	
18 th Edition	Lighting Requirements Added option to specify lighting circuit as domestic for RCD requirement check.	✓	
18 th Edition	Automatic disconnection time provisions Regulation 419 can be applied to electronic equipment for some Motor load types.	✓	
Feature	Cable Search Users can now search through the available cable types when in the cable dialog to quickly select the required cable.	✓	✓
Improvement	Terminology Change Discrimination changed to Selectivity, to align with Part 2 of BS7671:2018.	✓	✓
Improvement	User Interface General Improvements.	✓	✓

These changes can be seen by visiting our website:

<http://mep.trimble.co.uk/singlecable>

Content Data update

Automatic data updates are user defined within the 'Check for Updates' tab under 'Application Settings'. Once applied, a check will be made for a new package upon every launch of the application. If a new package is found, you will be prompted to install it now or later. Once installed, the application will be restarted.

Manual data updates are run at users' discretion. If your application is not set to automatically check for data updates, you can manually check by going to the 'Check for Updates' tab under 'Application Settings' and clicking 'Check Now'. If a new package is found, you will be prompted to install it now or later. Once installed, the application will be restarted.

Section 1 – Summary

Section 2 Detailed Content Changes

Section 1	Summary
New Content	Circuit Protective Devices: Generic <i>See Section 2 for details</i>

Section 2	Detailed Content Changes
-----------	--------------------------

Circuit Protective Devices

Generic

- New content – addition of new Generic AFDD ranges. This includes standalone AFDDs (AFDD), AFDDs with overcurrent protection (AFDD MCB), and with overcurrent & earth fault protection (AFDD RCBO). These AFDDs are available in 6A to 40A ratings with a 10kA breaking capacities.

ProDesign Domestic

ProDesign Domestic has been fully retired and is no longer supported.

Information in this document is subject to change without notice and does not represent an assurance of liability on the part of Amtech Group Ltd, a Trimble Company. Amtech Group Ltd reserves the right to enhance or add new features which may not always be reflected in the manual supplied.

The software described in this document is furnished under a licence agreement and may be used or copied in accordance with the terms of the agreement.

It is against the law to copy the software except as specifically allowed in the licence agreement. No part of this manual may be reproduced or transmitted in any form or by any means, electronic or mechanical, including photocopying and recording, for any purpose, without the express permission of Amtech Group Ltd.

Microsoft and Windows are either registered trademarks or trademarks of Microsoft Corporation in the United States and/or other countries. All other trademarks are the property of their respective owners.

Copyright and trademarks

© 2018, Trimble Inc. All rights reserved.

Trimble, and the Globe & Triangle logo are trademarks of Trimble Inc., registered in the United States and in other countries.

FastTest 18th Edition

SOFTWARE

This document contains summary information on new features, late-breaking product information, updates, and troubleshooting tips not covered in the Trimble® FastTest documentation.

Introduction

These release notes describe the features and enhancements that are new in version 2018.0.0.799 of the FastTest, for the following components only:

- FastTest Desktop Software

For further support information, go to <http://mep.trimble.co.uk/support>.

New features and changes

The improvements that have been made to the FastTest 18th edition software are summarised in the following table.

Upgrade procedure

Updates will be made available and automatically downloaded via the members login area.

Version: 2018.0.0.799

Date: 2018

Month: October

Summary of features and changes

New features details

Minor Electrical Installation Works Certificate:

The Minor works certificate has changed from a previously 4 part certificate in 17th Edition A3 to a 5 part certificate for 18th Edition.

The removal of RCD Operating time at $5xI_n$ from test results has been introduced for the 18th Edition

Part 1: Description of minor works

Part 2: Presence and adequacy of installation earthing and bonding arrangements
(Regulation 132.16)

Part 3: Circuit details

Part 4: Test results for the circuit altered or extended (where relevant and practicable)

Part 5: Declaration

There is also the addition of the AFDD (Arc fault detection devices) added to the certificate.

AFDD has been added to the test results section (part 4).

This is for a manual test satisfactory (YES/NA)

Electrical Installation Certificate

The EIC certificate has gone through some updates that will bring it in line to the 18th Edition. Details list below are a page by page changes that have been address to the EIC.

Page 1

July 2018 date on declaration

Details of departures from BS 7671 as amended (Regulations 120.3, 133.1.3 and 133.5)

This would be for Design, Construction, Inspection and Testing

Page 2:

Particular of installation at origin.

Split continuity/connection verified now two boxes with each being a selection choice




Continuity verified (v)

Connection verified (v)

Main protective bonding.

Split continuity/connection verified now two boxes with each being a selection



Continuity verified (v)

Connection verified (v)

Method of measurement.

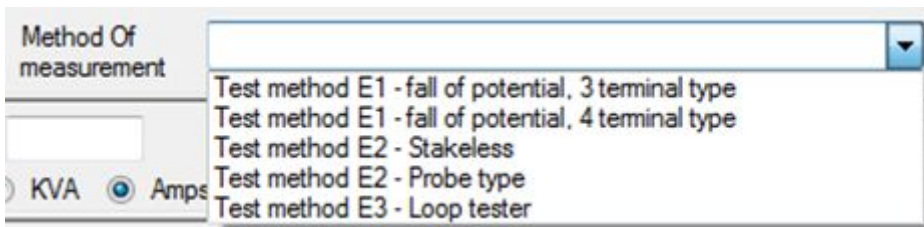
Test method E1 - fall of potential, 3 terminal type

Test method E1 - fall of potential, 4 terminal type

Test method E2 - Stakeless

Test method E2 - Probe type

Test method E3 - Loop tester



Method Of measurement

Test method E1 - fall of potential, 3 terminal type

Test method E1 - fall of potential, 4 terminal type

Test method E2 - Stakeless

Test method E2 - Probe type

Test method E3 - Loop tester

KVA Amps

Test Results Page:

Supplementary conductors' option check box YES/NO

If the data check warning appears then the supplementary conductors' box is active the box is not active at other times.

If this is not selected then the validation fails the certificate.

Insulation resistance test voltage

column added this will be a box for 250 or 500 in the drop down also with free text entry for 5 characters with F5 flood fill option

The removal of RCD Operating time at $5xI_n \Delta n$ from test results has been introduced for the 18th Edition.

Boards:

Circuit Details - (AFDD) Arc Flash Detection Device option

After selecting the BS(EN) type there is a AFDD radio button.

If press this will remove the ZS value and allow for a manual entry

If the AFDD unticked the ZS values for the fuse type will be added according to the rating and disconnection times.

CIRCUIT DETAILS														
Circuit number and line	Circuit Designation	Type of wiring (see code below)	Reference method	Number of points served	Circuit conductors: CSA			Overcurrent protective device	RCD	Maximum Zs per BS7671				
					Live mm2	CPC mm2	Max disconnection time permitted by BS7671 (s)				BS(EN)	AFDD	Type	Rating (A)
1/TP	Test Way	A	A	1	1.5	1.5	5	60898 MCB	<input checked="" type="checkbox"/>	B	16	10		
2/TP	SPARE								<input type="checkbox"/>					
3/TP	SPARE								<input type="checkbox"/>					
4/TP	SPARE								<input type="checkbox"/>					
5/TP	SPARE								<input type="checkbox"/>					
6/TP	SPARE								<input type="checkbox"/>					
7/TP	SPARE								<input type="checkbox"/>					
8/TP	SPARE								<input type="checkbox"/>					

Electrical Installation Condition Report

The EICR certificate has gone through some updates that will bring it in line to the 18th Edition. Details list below are a page by page changes that have been address to the EICR.

Page 1:

Section D

Agreed limitations current regulation number is 634.2 changes to 653.2

Page 2:

Particular of installation at origin.

Split continuity/connection verified now two boxes with each being a selection Choice

Continuity verified	<input checked="" type="checkbox"/>	(✓)
Connection verified	<input checked="" type="checkbox"/>	(✓)

Main protective bonding.

Split continuity/connection verified now two boxes with each being a selection

Continuity verified	<input checked="" type="checkbox"/>	(✓)
Connection verified	<input checked="" type="checkbox"/>	(✓)

Test Results Page:

Supplementary conductors' option check box YES/NO

If the data check warning appears then the supplementary conductors' box is active the box is not active at other times.

If this is not selected then the validation fails the certificate.

Insulation resistance test voltage

column added this will be a box for 250 or 500 in the drop down also with free text entry for 5 characters with F5 flood fill option

The removal of RCD Operating time at $5 \times I_n \Delta n$ from test results has been introduced for the 18th Edition.

Domestic Electrical Installation

The DOM-EIC certificate has gone through some updates that will bring it in line to the 18th Edition. Details list below are a page by page changes that have been address to the EICR.

The removal of RCD Operating time at $5 \times I_n$ from test results has been introduced for the 18th Edition

Page 1

Design, Construction, Inspection and testing

The date has changed to reflect the 18th Edition

Details of departures from BS7671 as amended (Regulations 120.3, 133.5)

Page 2:

Particulars of installation at origin

Earthing Conductor, Main protective bonding conductor Split continuity/connection verified now two boxes with each being a selection

The screenshot shows two side-by-side form panels. The left panel is titled 'Earthing conductor' and contains fields for 'Conductor material' (a dropdown menu), 'Conductor csa' (a dropdown menu followed by 'mm²'), and two checkboxes: 'Continuity verified' and 'Connection verified', each with a '(✓)' icon. The right panel is titled 'Main protective bonding conductors' and contains fields for 'Conductor material' (a dropdown menu), 'Conductor csa' (a dropdown menu followed by 'mm²'), and two checkboxes: 'Continuity verified' and 'Connection verified', each with a '(✓)' icon. Below these is a text input field labeled 'Location (where not obvious):'.

Method Of Measurement

Test method E1 - fall of potential, 3 terminal type

Test method E1 - fall of potential, 4 terminal type

Test method E2 - Stakeless

Test method E2 - Probe type

Test method E3 - Loop tester

The screenshot shows a dropdown menu titled 'Method Of measurement'. The menu is open, displaying five options: 'Test method E1 - fall of potential, 3 terminal type', 'Test method E1 - fall of potential, 4 terminal type', 'Test method E2 - Stakeless', 'Test method E2 - Probe type', and 'Test method E3 - Loop tester'. Below the dropdown, there are radio buttons for 'KVA' and 'Amps', with 'Amps' being selected.

Boards

Circuit Details - (AFDD) Arc Flash Detection Device option.

After selecting the BS(EN) type there is a AFDD radio button.

If pressed this will remove the ZS value and allow for a manual entry only

If the AFDD is unticked then ZS values for the fuse type will be added according to the rating and disconnection times.

Test Results Page:

Supplementary conductors' option check box YES/NO

If the data check warning appears then the supplementary conductors' box is active the box is not active at other times.

If this is not selected then the validation fails the certificate.

Insulation resistance test voltage

column added this will be a box for 250 or 500 in the drop down also with free text entry for 5 characters with F5 flood fill option

The removal of RCD Operating time at $5xI_n \Delta n$ from test results has been introduced for the 18th Edition.

Legal notices

Trimble Inc
MEP Division
10368 Westmoor Drive
Westminster, Colorado 800021
USA
800-361-1249 (toll free in USA)
+1-937-245-5154 Phone
+1-937-233-9441 Fax
www.trimble.com

Copyright and trademarks

© 2018, Trimble Inc. All rights reserved.

Trimble, and the Globe & Triangle logo are trademarks of Trimble Inc, registered in the United States and in other countries.

Microsoft and Windows are either registered trademarks or trademarks of Microsoft Corporation in the United States and/or other countries. All other trademarks are the property of their respective owners.