

Trimble Amtech Software

Quick Guide

2017 - Patch 2 - Released May 2018

We're here to help...

Receive the backing of a unique technical support service from the largest team of qualified engineers in the industry who understand your business and your specific needs.

If you don't already benefit from our technical support call us now on 0800 028 28 28 or visit mep.trimble.co.uk

Are you already a member?

If you have any queries please contact our PremierCare Support Team on 01908 608833 or email amtech-support@trimble.com

Activation

To activate your software call 01908 608833.

Training

For information on all our training courses visit the training area of our website at mep.trimble.co.uk/training

Quick Guide

Contents

System Requirements	4
Installation	5
Desktop installation.....	5
Activating your software.....	6
Software Upgrade.....	9
Automatic Updates.....	10
Technical Assistance	10
Product Update.....	11
Trimble ProDesign	11
Trimble ProDesign 3D	13
Protect.....	15
PowerNet.....	16
Single Cable	17
Content Data update	18
FastTest.....	19
ProDesign Domestic.....	19

System Requirements

These specifications refer to the minimum specifications across our range of software applications.

Computer (desktop or laptop)

Minimum PC and system requirements are:

- Intel Core i3 processor (2.0 GHz processor) or equivalent
- 4GB RAM
- 1.5GB free hard disk space
- Mouse
- Monitor: 1024x768 resolution – min 256 colours (recommended 1280x1024)
Recommended screen font size 96 DPI (100%)

Minimum PC and system requirements for Trimble ProDesign 3D are as specified by [AutoDesk REVIT](#)

Operating Systems

The following operating systems (with latest updates applied) are supported:

- Microsoft Windows 7 SP1 Home Premium or above (32 and 64 bit)
- Microsoft Windows 8.1 (all editions excluding RT) or above (32 and 64 bit)
- Microsoft Windows 10 (32 and 64 bit)
- Microsoft Windows Server 2008 and above (FastTest network installation)

Prerequisites

- An NTFS file system must be used (not FAT32)
- Our software cannot be installed to a compressed drive
- Antivirus and firewall security software should be disabled prior to the installation
- The installation process is designed to run locally, not over a network

Installation

Desktop installation

See System Requirements for details of supported versions.

You will need your licence number.

To install from a download:

- Ensure that you are a local machine administrator.
- Close all open applications, including virus checkers, if running, before starting the installation.
- Download the installer using the link provided. Save the file to your PC.
- Double click on the downloaded file to extract the installation files.
- Setup should start automatically.
- Setup will run. Follow on-screen instructions.

To install from a DVD:

- Ensure that you are a local machine administrator.
- Close all open applications, including virus checkers, if running, before starting the installation.
- Insert the Trimble Amtech Software DVD in your disk drive.
- Setup should start automatically. Setup will run from the DVD. Follow on-screen instructions.

Concurrent Licence Users

Installation instructions can be found in the 'Installation Guides' Folder on the installation DVD.

A new licensing key may be required for your server.

Please contact our Activation Department 01908 608833 or amtech-licensing@trimble.com for further information.

Activating your software

Our software is sold as a single user, single installation licence unless otherwise specified in your licence agreement. The software may be installed and activated on a single computer. Multi- user licence agreements will allow the software to be installed and activated on a specified number of computers.

The software is protected and requires activation before unrestricted use. Before activation there will be full functionality but the message "DEMONSTRATION ONLY" will be printed on all documents.

You will receive reminders to activate the software. However, after 30 days the software must be activated.

How do I activate my software?

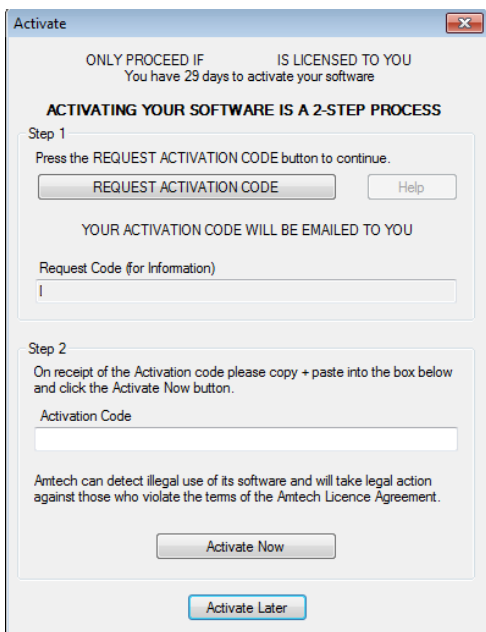
Activating your new software is a two-step process

Step 1 - Send your 'Request Code'

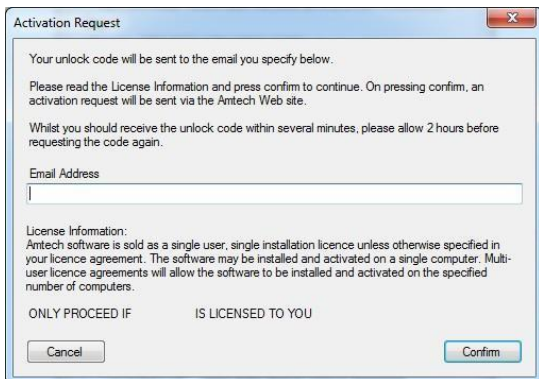
The preferred method of activation is to use the 'REQUEST ACTIVATION CODE' button which sends your 'Request Code' to us electronically. An email auto-responder will check to ensure that your company is the registered purchaser of the software and that there is a user licence available. The auto-responder operates 24 hours a day seven days per week, giving prompt response any time of day.

The Activate dialog box may appear at start-up and various other times indicating how many days you have left.

If the dialog box doesn't appear automatically then it can be accessed by going to the 'Support' menu and selecting 'Activate software'



Click on the 'REQUEST ACTIVATION CODE' button.



On pressing the 'Confirm' button an activation request will be sent via our website.

The email response will be sent to the address entered on the Activation Request dialog.

Users who are unable to activate electronically may call the Activation Hotline on 01908 608833 (Monday to Friday 9am – 5pm). A support representative will undertake the security checks manually and then, if appropriate, authorise and issue an unlock code.

Please note: that manual activation process may take several minutes. We strongly suggest that you use the email method if possible as the process of dictating and recording a long code by phone is open to transcription errors.

Telephone calls are recorded to help prevent fraud.

Step 2 - Receive your 'Activation Code' and activate your software

Check your email inbox. If you have not received your activation code by email after a few minutes then check your email system's Junk/Spam inbox in case the message has been re-directed to there.

When you receive your 'Activation code' you must enter this into the lower box. Use copy and paste functions if possible to eliminate transcription errors.

If you have received your activation code by phone enter it into the lower box. Be sure to type it accurately. The majority of the support problems relating to activation are due to incorrectly recorded or mis-typed activation codes.

Then click on the 'Activate Now' button to complete the process.

Software Upgrade

This booklet is designed to outline the changes to your software. Further details can be found in the software help system and electronic manual. These can be accessed via the software 'Help' menu.

Trimble Installation Ribbon menu Toolbars Home tab Construction tab Calculation tab Reports tab Report/Export tab Glossary

Search

Welcome to the Amtech ProDesign Online Help

The place to find user information, FAQs, and more

About Amtech ProDesign

The ProDesign software gives you the following:

- » Fast, accurate design calculations in 2D/3D/2009 (2023)
- » Produce schematics drawings quickly and easily
- » 'What If' scenarios—try different ideas with a click of the mouse
- » Verify loading data accurately with industry standards
- » Comprehensive range of high quality reports
- » Print/scan import and export
- » Save reports and schematics as PDF files

Where Do I Begin?

- » Installing ProDesign
- » Frequently asked questions
- » Glossary
- » Amtech Training
- » Amtech Premier Care
- » End User License Agreement

Design © 2021 Amtech Limited www.amtech.co.uk

Automatic Updates

Our software can automatically check whether a suitable web update is available. If an update is available then the automatic update feature will offer to download and install it for you. Our Automatic Update feature is available in all desktop software products (i.e. non Mobile products).

We recommend checking for updates as soon as you have installed your software. You can initiate an update check at any time by selecting the 'Support' menu, selecting the 'Check for Updates' option and clicking on the 'Check Now' button.

In order to be quickly informed of any appropriate web updates for your software in the future you should ensure that the 'Check for Updates' feature is always enabled.

Availability of Web Updates

In order to be able to receive a web update you must have:

- A current PremierCare agreement for the specific application
- Registered your software on our website
- Internet access

Technical Assistance

Our Technical Support offers a support tool which allows Support Engineers to view and control users' machines remotely with their permission.

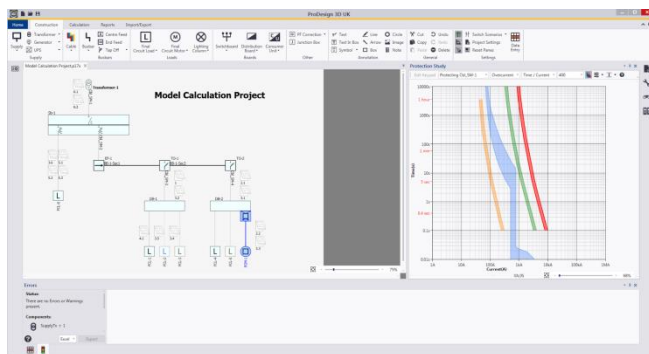
All our applications have a menu option link to the Support web page, which has a direct link to the Assistance login page.

Product Update

Trimble ProDesign

ProDesign 2017

With the 2017 release of ProDesign the program has received an update to its user interface with the integration of the Protect product, as can be seen in the image below.



ProDesign now allows the user to interact with the Protect (protection study) user-interface more dynamically, allowing for easier visibility and manipulation of your protective devices within the project. This includes moving protective device settings within the graph, and allowing for the devices to be changed entirely without the need to go into the ProDesign dialogs. The Grading margin function has also been integrated from the Protect application, so it's possible to see straight away if two devices are suitable.

Device updates will now be available separately to software updates. This means, if a manufacturer releases a new range of protection / distribution equipment, access is immediate without the need to update software at the same time.

In addition to existing shortcuts, four more have been added to make ProDesign even simpler to use. Users can now press F2 for Calculate project, F3 for Discrimination project, F4 for protection study and F5 to run cable calculation reports.

ProDesign 2017 Patch 2

With the release of ProDesign 2017 Patch 2 (May 2018), the program has been optimised and improved. The main updates have been outlined below.

Additional Update

For a summary of all the updates made to ProDesign 2017, Patch 1, please see the list below.

Issue Type	Summary	ProDesign	ProDesign ME
Improvement	Data Entry Design Length & Total length keep 2 decimal space	✓	✓
Improvement	Separate CPC change to CPC Configuration Shows the type of CPC and equivalent copper size being used	✓	✓
Improvement	Calculation Errors Shown in Circuit View Red arrow and new column appear when viewing the circuit chart in a board	✓	✓
Feature	Board Circuit View Sort Can now sort by each column in a Circuit View for Distribution Board / Consumer Unit	✓	✓
Bug	Legacy Project Conversions	✓	✓
Feature	Orthogonal Line Shortcut - F8	✓	✓

These changes can be seen by visiting our website:

<http://mep.trimble.co.uk/prodesign>

Trimble ProDesign 3D

Trimble ProDesign 3D is a new product that came out in November 2016 offered by Trimble, using the same Calculation engine as ProDesign within the Autodesk Revit 2016, 2017, 2018 and 2019 3D Environment.

Trimble ProDesign 3D will allow the user to have the great features of ProDesign within the Revit environment. This includes data, error dialogs, reporting functionality and protective devices behind ProDesign all still calculating in accordance with BS7671. ProDesign 3D has added a number of useful new features which are identified in the list below.

Issue Type	Summary	ProDesign 3D
Feature	Network Validation Check components and connections are valid prior to calculating	✓
Feature	Swap Circuits on Switchboards, Distribution Board and Consumer Units in Circuit View Rearrange loads on boards within the ProDesign 3D settings dialog	✓
Feature	Final Circuit Display Show important loads on the generated schematic	✓
Feature	Resolving Incorrect Circuits on Switchboards, Distribution Boards and Consumer Units Automatically resolve incorrectly connected circuits or fix individual circuits within the ProDesign 3D settings dialog	✓
Improvement	Workshare Projects Workshare checking and information	✓
Improvement	TRMB CPD Rating Ir parameter Provides the ability to add the CPD Ir rating to panel schedules where applicable	✓

For more information on the features identified, please see the relevant section within the help file.

Revit/ProDesign3D Workshare

The workshare improvement allows ownership of components when working in a shared model. If one user has ownership of a component and another tries to edit it, they will get a notification advising them of the user it belongs to and then present a Read Only window of that component.

The image shows two overlapping dialog boxes in a Revit software interface. The top dialog is titled 'Workshare Errors' and contains a table of error details. The bottom dialog is titled 'Distribution Board Settings (Read Only)' and shows configuration options for a distribution board.

Workshare Errors

You cannot edit the selected component because Revit will not allow ProDesign 3D to make changes to the following element(s). If you click "OK" the component editor will open in "Read Only" mode, you can browse the data but you cannot save any changes that you make. Also, any changes made by the Validation will not be saved as well.

Category	Name	Owned By	Workset	Up To Date?			
Electrical Circuits	5	Me <Scramph>	Workset1	<input type="checkbox"/>			
Electrical Circuits	1	Me <Scramph>	Workset1	<input type="checkbox"/>			
Electrical Equipment	Corridor B TP	Me <Scramph>	Workset1	<input type="checkbox"/>			

OK Cancel

Distribution Board Settings (Read Only)

ID	Connections	Phase	Equipment Type
Corridor B TP	FROM 1,2,3	3 Phase + N	Distribution Board

Board Details

Wired: TPN

Protection

- Incomer Protection
- Default Protective Device
- Assigned Spaces

Board Loading Method

- Diversity
- Circuits
- Earthing

Number Of Ways: 4

Load Rating: A

Fault Rating: kA

Function:

Location:

Model No.:

OK Cancel

Protect

Protect is so easy to use, you don't need to be a protection expert to use it. The software contains a database with data on thousands of protective devices. This is data direct from, and approved by, leading manufacturers so you can be confident in its accuracy. This is particularly important as so many adjustable breakers are being used these days – it is essential to get these set correctly at the outset. Nobody wants to revisit jobs to sort out nuisance tripping that could so easily have been avoided at the design stage.

Some New features which were outlined in Release notes for 2017 Patch 1

- User Interface
- New Device Selector
- Automatic propagation of fault current from upstream components
- Grading margins
- New transformer dialog (HV only)
- New Generic breaker Selector (HV Only)
- New Parallel device Selector dialog (HV only)
- Improved Motor selector dialog (HV only)

These changes can be seen by visiting our website:

<http://mep.trimble.co.uk/protect>

PowerNet

A powerful graphical short circuit analysis program for the calculation of short circuit currents to IEC 60909 and BS 7639. PowerNet deals with fault currents in both High and Low Voltage distribution systems. Quick and easy to use it enables studies to be carried out cost effectively on new and existing systems.

These changes can be seen by visiting our website:

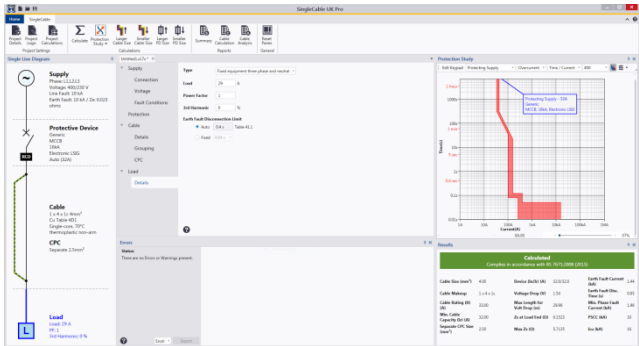
<http://mep.trimble.co.uk/powernet>

For detailed product update please see below.

Issue Type	Summary	Fix Version/s	PowerNet
N/A	No Updates made		

Single Cable

SingleCable is a cable calculation software that is extremely simple to use and provides results in seconds, whether the cable is a sub-main feeder or final circuit. Once calculated, the program also enables you to look at the results for the next cable size larger or smaller, and the same facility is available for the protective device. This is most useful for looking at 'what if' situations, a luxury not available when doing calculations manually.



The other great new features for Single Cable are outlined below: The new user interface, including the single-line diagram, alongside improved integration with Protect, means Single Cable can greatly improve the efficiency of calculations, allowing users to see the both the device and the circuit as a whole throughout the design phase.

In addition to existing shortcuts, three more have been added to make Single Cable even simpler to use. Users can now press F2 for Calculate project, F4 for protection study and F5 runs the cable calculation report.

Device updates will now be available separately to software updates. This means, if a manufacturer releases a new range of protect / distribution equipment, access is immediate without the need to update software at the same time.

These changes can be seen by visiting our website: <http://mep.trimble.co.uk/singlecable>

Content Data update

This document contains a full record of all content revisions contained within the November 2017 Design Suite content update. To apply content updates to your application follow the below instructions.

Automatic data updates are user defined within the 'Check for Updates' tab under 'Application Settings'. Once applied, a check will be made for a new package upon every launch of the application. If a new package is found, you will be prompted to install it now or later. Once installed, the application will be restarted.

Manual data updates are run at users' discretion. If your application is not set to automatically check for data updates, you can manually check by going to the 'Check for Updates' tab under 'Application Settings' and clicking 'Check Now'. If a new package is found, you will be prompted to install it now or later. Once installed, the application will be restarted.

Section 1	Summary
New Content	<p>Circuit protective devices:</p> <ul style="list-style-type: none">• Proteus products• Schneider products• Siemens products

See Section 2 for details

Section 2	Detailed Content Changes
-----------	--------------------------

Proteus

- New content – addition of new CB MCBs. Available in Type C 80A, 100A & 125A ratings and 1 & 3 poles.
- New content – addition of new MC adjustable Th/Mag MCCBs. Available in 160A, 250A, 400A & 630A frame sizes, 4 poles and 36kA & 50kA breaking capacities (frame size dependent).

Schneider

- New content – addition of new NSXm adjustable Th/Mag MCCBs. Available in 160A frame size, 3 & 4 poles and 16kA, 25kA, 36kA, 50kA & 70kA breaking capacities.
- New content – addition of new GV3P adjustable Th/Mag Motor Circuit Breakers. Available in 13A to 80A ratings.

Siemens

- New content – addition of new Siemens ETU550/560/850/860 LSI/LSIG electronic trip units on their 3VA2 range of MCCBs. Available in 100A, 160A, 250A, 400A & 630A frame sizes, 3 & 4 poles and 55kA, 85kA, 110kA and 150kA (excluding 3VA23-24) breaking capacities.

FastTest

You will need your new licence number provided via email. This will be used in the installation process.

Once installation is complete, activation of your FastTest will need to be carried out.

ProDesign Domestic

ProDesign Domestic is being retired from all packages from 2017 onwards. We will continue to supporting the product until the release of Prodesign 18th Edition.

Information in this document is subject to change without notice and does not represent an assurance of liability on the part of Amtech Group Ltd, a Trimble Company. Amtech Group Ltd reserves the right to enhance or add new features which may not always be reflected in the manual supplied. The software described in this document is furnished under a licence agreement and may be used or copied in accordance with the terms of the agreement.

It is against the law to copy the software except as specifically allowed in the licence agreement. No part of this manual may be reproduced or transmitted in any form or by any means, electronic or mechanical, including photocopying and recording, for any purpose, without the express permission of Amtech Group Ltd.

Microsoft and Windows are either registered trademarks or trademarks of Microsoft Corporation in the United States and/or other countries. All other trademarks are the property of their respective owners.

Copyright and trademarks

© 2016, Trimble Inc. All rights reserved.

Trimble, and the Globe & Triangle logo are trademarks of Trimble Inc., registered in the United States and in other countries.