

Quick Guide 2012



Software for the Building Services Industry

 **amtech**

Amtech 2012 Upgrade Guide

Contents

System Requirements	3
Installation	5
Desktop installation	5
Mobile Installation	6
Activating your Amtech software	8
Amtech 2012 Upgrade	11
Automatic Updates	12
Amtech Assistance	12
FastTest	13
Electrical Installation Condition Report.....	13
Revised BS88 fuse data	13
Other changes	14
GasCert	14
CP6 certificate	14
ProDesign and SingleCable	15
Trough Installation Methods	15
Revised Rating Factors	15
Minimum Cable Size.....	16
Flexible Conductors.....	16
Revised BS88 fuse data	16

System Requirements

These specifications refer to the minimum specifications across the range of Amtech software applications.

Computer (desktop or laptop)

Minimum PC and system requirements are:

- Intel Pentium 4 (2.0 GHz processor)
- 1GB RAM (2GB recommended)
- 1.5GB free hard disk space
- DVD drive
- Mouse
- Monitor: 1024x768 resolution – min 256 colours
(recommended 1280x1024)
Recommended screen font size 96 dpi or smaller (100%)

Operating Systems

The following operating systems are supported:

- Microsoft Windows XP SP3 or above - Home or Pro (32 bit)
- Microsoft Windows Vista Home Premium SP2 or above (32 and 64 bit)
- Microsoft Windows 7 SP1 Home Premium or above (32 and 64 bit)
- Microsoft Windows Server 2003 (FastTest network installation)

Prerequisites

- An NTFS file system must be used (not FAT32)
- The Amtech product suite cannot be installed to a compressed drive
- The installation process is designed to be run locally, not over a network

Amtech Mobile Software

Amtech Mobile software (FastTest Mobile and GasCert Mobile) require a PDA (Personal Data Assistant) running Microsoft Windows Mobile 6, 6.1 or 6.5 later.

The minimum PDA memory requirement is 64Mb.

The following Microsoft desktop to PDA connectivity software is required:

PDA operating system	Desktop operating system	Microsoft connectivity software required
Windows Mobile 6.0	XP	ActiveSync v4.5
	Vista	Mobile Device Center v6.1 or above
	Windows 7	Mobile Device Center v6.1 or above
Windows Mobile 6.1	XP	ActiveSync v4.5
	Vista	Mobile Device Center v6.1 or above
	Windows 7	Mobile Device Center v6.1 or above
Windows Mobile 6.5	XP	ActiveSync v4.5
	Vista	Mobile Device Center v6.1 or above
	Windows 7	Mobile Device Center v6.1 or above

Amtech Mobile software is installed using a desktop or laptop PC.

Please Note:

Amtech Mobile software can only be installed on Windows Mobile 6 operating systems. Amtech Mobile software cannot be installed onto a PDA using a Palm, Apple, Android or Blackberry operating system.

Installation

Desktop installation

First, ensure that Microsoft® Windows™ is already installed on your system.

You need your Amtech 2012 DVD and 2012 licence number.

Your 2012 licence number can be found on the Delivery Note included with the software.

To install:

- Ensure that you are a local machine administrator.
- Close all open applications, including virus checkers, if running, before starting the installation.
- Insert the Amtech 2012 DVD in your disk drive.
- Setup should start automatically.

Setup will run from the DVD. Follow on-screen instructions.

FastTest and GasCert Users

We recommend creating a backup of any existing database before installing the 2012 upgrade.

Users of FastTest Mobile or GasCert Mobile should ensure all certificates are transferred from their mobile software before upgrading the desktop software.

Further information about installation and database configuration can also be accessed by logging into the Amtech website:

<https://www.amtech.co.uk/login>

Concurrent Licence Users

Installation instructions can be found in the 'Installation Guides' folder on the installation DVD.

A new Amtech 2012 licensing key will be required for your server. Please contact our Activation Department on **0871 220 8880** or licensing@amtech.co.uk for further information.

Mobile Installation

Please read ALL the instructions before you start.

CAUTION

Ensure that the mobile software is installed from the PC that the data transfer will take place on.

1. Connect your PDA to your computer using Microsoft ActiveSync version 4.5 if you are using Windows XP or connect your PDA to your computer using Microsoft Windows Mobile Device Centre 6.1 if you are using Windows Vista or Windows 7. The manufacturer of the PDA normally supplies this software however ActiveSync or Windows Mobile Device Centre may be downloaded from Microsoft free of charge. Follow the manufacturer's instructions and establish a connection.
2. If you are upgrading from a previous version of FastTest/GasCert Mobile you need to ensure that any data that has been collected using the previous version has already been transferred to the PC as this will need to be removed using the Remove Programs option on your PDA before installing the latest version.
3. Insert the Amtech 2012 DVD into the disk drive. The DVD should Autorun. Follow the instructions on screen. If it doesn't, view the files on the DVD and double click 'setup.exe'
4. When prompted enter your Mobile licence number and click 'Next'. Click 'Yes' to agree to the licence agreement. Please note there are separate licence numbers for FastTest and GasCert. The licence number will determine which product is installed.

Follow instructions on the PC screen. You will also need to action instructions on the PDA screen.

There may be a number of additional Microsoft administration screens and actions required. The install process is in three distinct steps. It is important that you install step 1 and 2 before attempting to install the Amtech software. Check your PDA screen regularly for instructions before selecting 'Next' on the PC.

- Step 1 - install the "Microsoft .NET Compact Framework" after which you will be instructed to restart the PDA. (This may not be required for all operating systems)
- Step 2 - install " Microsoft SQLCE 2.0"
- Step 3 - install the Amtech software

Always use the default option unless you fully understand the consequences of not selecting the default option offered.

Start Menu – Your PDA has a drop down 'Start' menu to give quick access to frequently used programs. The list is limited to seven programs. To ensure that FastTest appears in this list go to the 'Settings' screen and select 'Menus'. Tick the programs you want to appear in the start menu.

Activating your Amtech software

Amtech software is sold as a single user, single installation licence unless otherwise specified in your licence agreement. The software may be installed and activated on a single computer. Multi-user licence agreements will allow the software to be installed and activated on a specified number of computers.

The software is protected and requires activation before unrestricted use. Before activation there will be full functionality but the message “DEMONSTRATION ONLY” will be printed on all documents.

You will receive reminders to activate the software. However, after 30 days the software must be activated.

Please Note: Amtech Mobile programs, i.e. FastTest Mobile and GasCert Mobile do not require activating.

How do I activate my Amtech software?

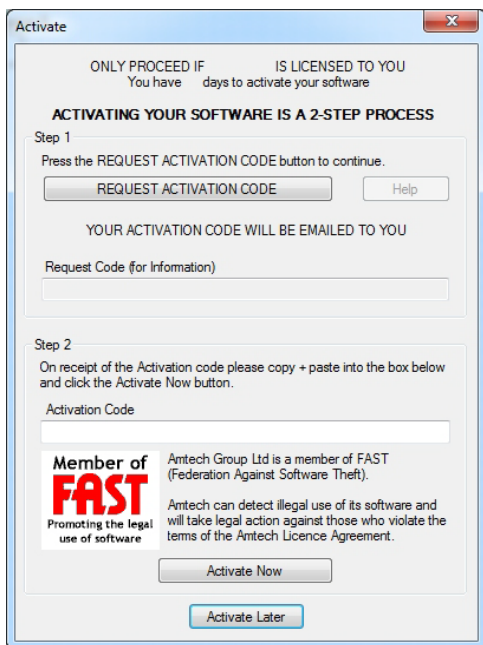
Activating your new software is a two step process

Step 1 - Send your 'Request Code' to Amtech

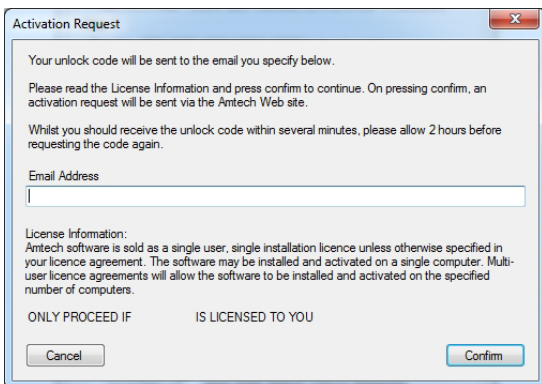
The preferred method of activation is to use the 'REQUEST ACTIVATION CODE' button which sends your 'Request Code' to Amtech electronically. An email auto-responder will check to ensure that your company is the registered purchaser of the software and that there is a user licence available. The auto-responder operates 24 hours a day seven days per week, giving prompt response any time of day.

The Activate dialog box may appear at start-up and various other times indicating how many days you have left.

If the dialog box doesn't appear automatically then it can be accessed by going to the 'Support' menu and selecting 'Activate software'.



Click on the 'REQUEST ACTIVATION CODE' button.



On pressing the 'Confirm' button an activation request will be sent via the Amtech website.

The email response from Amtech will be sent to the address entered on the Activation Request dialog.

Users who are unable to activate electronically may call the Amtech *Activation Hotline* on 0871 220 8880 (Monday to Friday 9am – 5pm). The number is displayed on the activation dialog box. An Amtech representative will undertake the security checks manually and then, if appropriate, authorise and issue an unlock code.

Please note that this manual activation process may take several minutes. We strongly suggest that you use the email method if possible as the process of dictating and recording a long code by phone is open to transcription errors.

Please do not contact Amtech Support or Amtech Sales regarding activation or de-activation as they are unable to process these requests.

Telephone calls are recorded to help prevent fraud.

Step 2 - Receive your 'Activation Code' and activate your software

Check your email inbox. If you have not received your activation code by e-mail after a few minutes then check your e-mail system's Junk/Spam inbox in case the message has been redirected to there.

When you receive your 'Activation code' from Amtech you must enter this into the lower box. Use copy and paste functions if possible to eliminate transcription errors.

If you have received your activation code by phone enter it into the lower box. Be sure to type it accurately. The majority of the support problems relating to activation are due to incorrectly recorded or mis-typed activation codes.

Then click on the 'Activate Now' button to complete the process.

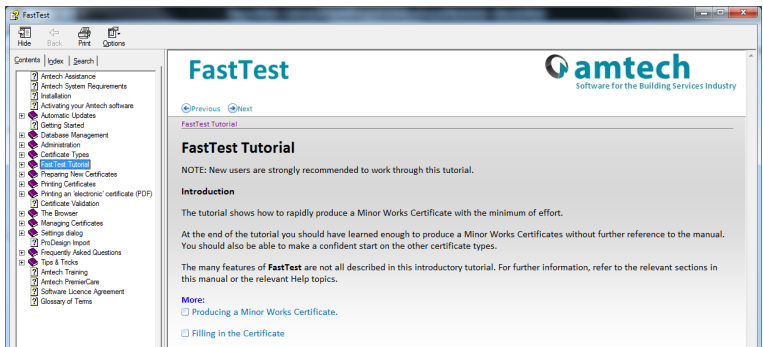
Amtech 2012 Upgrade

2012

The Amtech 2012 release updates your software for compliance with BS7671:2008 Amendment 1 (2011).

17th Edition amendment 1

This booklet is designed to outline the changes to your Amtech software. Further details can be found in the software help system and electronic manual. These can be accessed via the software 'Help' menu.



Automatic Updates

Amtech software can automatically check whether a suitable web update is available. If an update is available then the automatic update feature will offer to download and install it for you. The Amtech Automatic Update feature is available in all Amtech desktop products (i.e. non Mobile products).

We recommend checking for updates as soon as you have installed your Amtech software. You can initiate an update check at any time by selecting the 'Support' menu, selecting the 'Check for Updates' option and clicking on the 'Check Now' button.

In order to be quickly informed of any appropriate web updates for your Amtech software in the future you should ensure that the 'Check For Updates' feature is always enabled.

Availability of Web Updates

In order to be able to receive an Amtech web update you must have:

- A current PremierCare agreement for the specific Amtech application
- Registered your Amtech software on the Amtech website
- Internet access

Amtech Assistance

Amtech Technical Support offers a support tool which allows Support Engineers to view and control users' machines remotely with their permission.

All Amtech applications have a menu option link to the Amtech Support web page, which has a direct link to the Amtech Assistance login page.

FastTest

Electrical Installation Condition Report

One of the changes introduced by BS7671:2008 Amendment 1 (2011) is the replacement of the Periodic Inspection Report with an Electrical Installation Condition Report. This new Electrical Installation Condition Report is available in FastTest 2012 as a 'BS Standard' form.

A. DETAILS OF THE CLIENT

Client: Address:

B. REASON FOR PRODUCING THIS REPORT This Periodic Inspection Report must be used only for reporting on the condition of an existing installation.

Purpose for which this report is required:

Date(s) of inspection:

C. DETAILS OF THE INSTALLATION WHICH IS THE SUBJECT OF THIS REPORT

Occupier: Description of premises: Domestic Commercial Industrial

Address: Other: (Please state)

Estimated age of wiring system: year(s)

Evidence of alterations or conditions: If yes estimated age: year(s)

Date of previous inspection: Not Known: Current Certificate Number:

Installation records available? (Regulation 52.1) Records held by:

D. EXTENT OF THE INSTALLATION AND LIMITATIONS OF THE INSPECTION AND TESTING

Extent of electrical installation covered by this report:

None

Agreed limitations including the reasons: (See regulations 634.2)

The obsolete Periodic Inspection Report format remains in the FastTest software so that you can re-print old reports.

Revised BS88 fuse data

BS7671:2008 (2011) has introduced different terminology for some fuse types.

- BS1361 fuses are now known as BS88-3 fuses
- BS88 gG fuses will now be referred to as BS88-2 fuses

The revised regulations have also adjusted the maximum Zs values for some fuses. Any changes to Tables 41.2 and 41.4 have been incorporated into FastTest.

Other changes

- References to BS7671:2008 regulations have been updated to accommodate amendment 1
- New concrete trough installation methods (117 to 120) available for projects imported from Amtech ProDesign
- Now compatible with SQL Server 2008 R2

GasCert

CP6 certificate

GasCert and FastTest Pro now offer the CP6 Appliance Service and Maintenance certificate.

It is available under the 'Amtech Standard' format option.

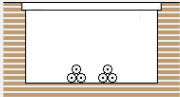
Details of the Appliance		Comments
Recently Used	<input type="text"/>	
Location (Position/Room)	<input type="text"/>	
(Type)	<input type="text"/>	
(Make)	<input type="text"/>	
(Model)	<input type="text"/>	
(Serial No.)	<input type="text"/>	
Combustion Gas Analysis Information		
Initial combustion analyser reading (where applicable):	<input type="text"/>	
Final combustion analyser reading (where applicable):	<input type="text"/>	
In relation to the initial combustion analyser reading above, has a full strip and clean service been undertaken?		<input type="text"/>
Findings		
Gas tightness test carried out?	<input type="text"/>	Gas tightness test result: <input type="text"/>
Is the Appliance/Installation safe for use?	<input type="text"/>	
If NO, issue a Warning/Advice Notice (record Serial No. of fom) and attach a Warning Label. Serial No. <input type="text"/>		
<input type="text"/>		
Next Service/Maintenance due on or before	<input type="text"/>	<input type="text"/>

ProDesign and SingleCable

Trough Installation Methods

Four new cable Installation Methods have been added to this version of our LV design software.

Installation Method Selection	
Step 1	Infloor troughs and trenches
Step 2	118 - In enclosed trench 450 x 300 minimum
Configuration	Trefoil
Size(mm ²) / Rating	50 167A <input type="checkbox"/> Auto
Ambient Temp °C	30
Length (m)	45
Phase	L1,L2,L3
Neutral Conductor	Sizing method Auto



The diagram shows a cross-section of a rectangular concrete trench. Inside the trench, two single-core cables are shown in a trefoil configuration, with their conductors touching each other and the trench walls.

Installation Method 118: Enclosed in infloor concrete troughs

Single-core cables in enclosed trench 450 mm wide by 300 mm deep (minimum dimensions) including 100 mm cover.

One or two groups of three single-core cables in trefoil formation.

Reference Method F

Installation Methods 117 to 120 as defined in BS7671:2008 (2011) Table 4A2 are now available for selection in all versions of ProDesign and SingleCable. These provide provision for cables enclosed in infloor concrete troughs.

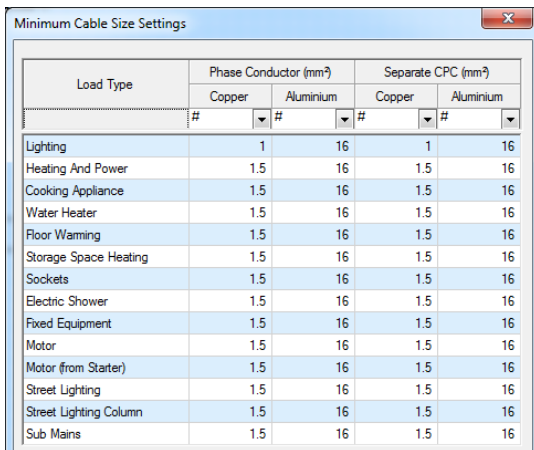
Revised Rating Factors

Some of the rating factors used to assess minimum cable capacity requirements have been altered by BS7671:2008 amendment 1. The following rating factor definitions have been altered or added:

- Cc now only relates to underground cable install methods (Ref D)
- Cf set to 0.725 where a BS3036 fuse is used
- Cs Soil thermal resistivity factor used for Reference Method D
- Cd Depth of burial factor used for Reference Method D

Minimum Cable Size

BS7671:2008 (2011) Table 52.3 requires that the minimum cable size for copper power circuits (non-lighting) is now 1.5mm².



Load Type	Phase Conductor (mm ²)		Separate CPC (mm ²)	
	Copper	Aluminium	Copper	Aluminium
	#	#	#	#
Lighting	1	16	1	16
Heating And Power	1.5	16	1.5	16
Cooking Appliance	1.5	16	1.5	16
Water Heater	1.5	16	1.5	16
Floor Warming	1.5	16	1.5	16
Storage Space Heating	1.5	16	1.5	16
Sockets	1.5	16	1.5	16
Electric Shower	1.5	16	1.5	16
Fixed Equipment	1.5	16	1.5	16
Motor	1.5	16	1.5	16
Motor (from Starter)	1.5	16	1.5	16
Street Lighting	1.5	16	1.5	16
Street Lighting Column	1.5	16	1.5	16
Sub Mains	1.5	16	1.5	16

Flexible Conductors

BS7671:2008 (2011) Appendix 4 Section 2.4 provides details of correction factors for class 5 flexible conductors. These factors have been included in our 2012 software range in the form of additional 'flexible' cable types.

Type	Single-core, 90°C thermosetting non-arm *RUN TO 70°C	Cu	Flexible
------	--	----	----------

Revised BS88 fuse data

BS7671:2008 (2011) has introduced different terminology for some fuse types.

- BS1361 fuses are now known as BS88-3 fuses
- BS88 gG fuses will now be referred to as BS88-2 fuses